



Web: www.anbobio.com
www.dijibio.com
Order: order@dijibio.com
Tel: (86) 519 8805 0026

MEN1 Antibody [#C13083]

Catalog Number: C13083

Concentration: 1mg/ml

Swiss-Prot No.: O00255

Other Names: MEAI; Menin; SCG2; Wermer syndrome; Zollinger-Ellison syndrome

Storage/Stability: Store at -20°C/1 year

Form of Antibody: Rabbit IgG in phosphate buffered saline (without Mg²⁺ and Ca²⁺), pH 7.4, 150mM NaCl, 0.02% sodium azide and 50% glycerol.

Immunogen: The antiserum was produced against synthesized peptide derived from internal of human MEN1.

Purification: The antibody was affinity-purified from

rabbit antiserum by affinity-chromatography using epitope-specific immunogen.

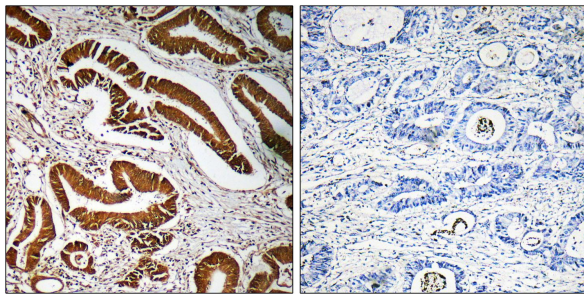
Specificity: MEN1 antibody detects endogenous levels of total MEN1 protein.

Reactivity: Human (Identities = 100%, Positives = 100%);
Mouse (Identities = 100%, Positives = 100%);
Rat (Identities = 100%, Positives = 100%)

Applications: WB: 1:500~1:3000 IHC: 1:50~1:100
ELISA: 1:20000

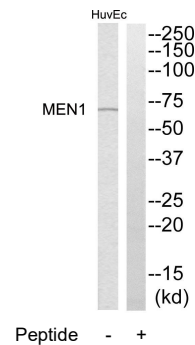
References:

Chandrasekharappa S.C., Science 276:404-407(1997).
Jin S., Cancer Res. 63:4204-4210(2003).
Schnepp R.W., Cancer Res. 64:6791-6796(2004).



Peptide - +

Immunohistochemistry analysis of paraffin-embedded human colon carcinoma tissue, using MEN1 antibody.



Western blot analysis of extracts from HuvEc cells, using MEN1 antibody.