



**Web:** [www.anbobio.com](http://www.anbobio.com)  
[www.dijibio.com](http://www.dijibio.com)  
**Order:** [order@dijibio.com](mailto:order@dijibio.com)  
**Tel:** (86) 519 8805 0026

## MSH2 Antibody [#C13089]

**Catalog Number:** C13089

**Concentration:** 1mg/ml

**Swiss-Prot No.:** P43246

**Other Names:** COCA1, DNA mismatch repair protein Msh2, FCC1, HNPCC, HNPCC1, MutS protein homolog 2, mutS (E. coli) homolog 2

**Storage/Stability:** Store at -20°C/1 year

**Form of Antibody:** Rabbit IgG in phosphate buffered saline (without Mg<sup>2+</sup> and Ca<sup>2+</sup>), pH 7.4, 150mM NaCl, 0.02% sodium azide and 50% glycerol.

**Immunogen:** The antiserum was produced against synthesized peptide derived from internal of human MSH2.

**Purification:** The antibody was affinity-purified from

rabbit antiserum by affinity-chromatography using epitope-specific immunogen.

**Specificity:** MSH2 antibody detects endogenous levels of total MSH2 protein.

**Reactivity:** Human (Identities = 100%, Positives = 100%);  
Mouse (Identities = 92%, Positives = 92%);  
Rat (Identities = 92%, Positives = 92%)

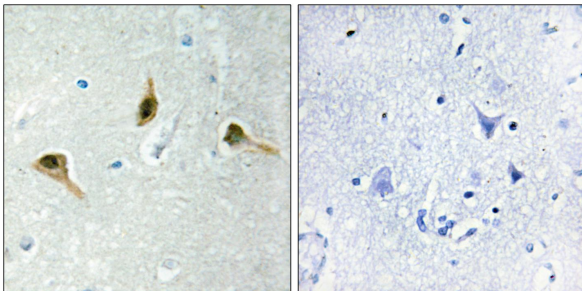
**Applications:** IHC: 1:50~1:100 IF: 1:100~1:500  
ELISA: 1:20000

**References:**

Fishel R., Cell 75:1027-1038(1993).

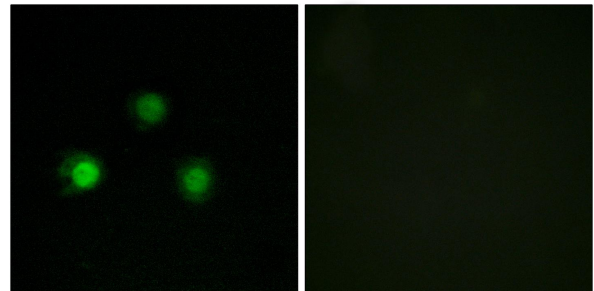
Wang Y., Genes Dev. 14:927-939(2000).

Wang Y., Proc. Natl. Acad. Sci. U.S.A. 100:15387-15392(2003).



Peptide - +

Immunohistochemistry analysis of paraffin-embedded human brain tissue using MSH2 antibody.



Peptide - +

Immunofluorescence analysis of HUVEC cells, using MSH2 antibody.