



**Web:** [www.anbobio.com](http://www.anbobio.com)  
[www.dijibio.com](http://www.dijibio.com)  
**Order:** [order@dijibio.com](mailto:order@dijibio.com)  
**Tel:** (86) 519 8805 0026

## PARP4 Antibody [#C13099]

**Catalog Number:** C13099

**Concentration:** 1mg/ml

**Swiss-Prot No.:** Q9UKK3

**Other Names:** 193-kDa vault protein, ADP- ribose, ADP-ribosyltransferase (NAD<sup>+</sup>, ADPRTL1, EC 2.4.2.30, H5 proline-rich, I-alpha-I-related, PARP-related/lalphal-related H5/proline-rich, PARP-4, PARP-related, PARPL, PH5P, VAULT3, VPARP, p193, poly (ADP-ribose) polymerase family, member 4, poly (ADP-ribose) polymerase)-like 1, poly [ADP-ribose] polymerase 4, poly(ADP-ribose) synthetase, poly(ADP-ribosyl)transferase-like 1, polymerase, vault poly, vault protein, 193-kDa

**Storage/Stability:** Store at -20°C/1 year

**Form of Antibody:** Rabbit IgG in phosphate buffered saline (without Mg<sup>2+</sup> and Ca<sup>2+</sup>), pH 7.4, 150mM NaCl,

0.02% sodium azide and 50% glycerol.

**Immunogen:** The antiserum was produced against synthesized peptide derived from internal of human PARP4.

**Purification:** The antibody was affinity-purified from rabbit antiserum by affinity-chromatography using epitope-specific immunogen.

**Specificity:** PARP4 antibody detects endogenous levels of total PARP4 protein.

**Reactivity:** Human (Identities = 100%, Positives = 100%)

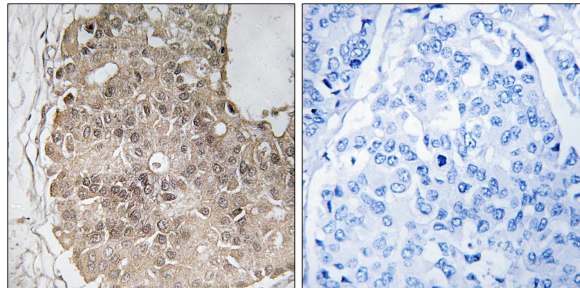
**Applications:** IHC: 1:50~1:100 ELISA: 1:10000

**References:**

Kickhoefer V.A., J. Cell Biol. 146:917-928(1999).

Dunham A., Nature 428:522-528(2004).

Still I.H., Genomics 62:533-536(1999).



Peptide

-

+

Immunohistochemistry analysis of paraffin-embedded human breast carcinoma tissue using PARP4 antibody.