



**Web:** [www.anbobio.com](http://www.anbobio.com)  
[www.dijibio.com](http://www.dijibio.com)  
**Order:** [order@dijibio.com](mailto:order@dijibio.com)  
**Tel:** (86) 519 8805 0026

## PHLDA3 Antibody [#C13102]

**Catalog Number:** C13102

**Concentration:** 1mg/ml

**Swiss-Prot No.:** Q9Y5J5

**Other Names:** Pleckstrin homology-like domain family A member 3, TDAG51/lpl homolog 1, PHLDA3, TIH1

**Storage/Stability:** Store at -20°C/1 year

**Form of Antibody:** Rabbit IgG in phosphate buffered saline (without Mg<sup>2+</sup> and Ca<sup>2+</sup>), pH 7.4, 150mM NaCl, 0.02% sodium azide and 50% glycerol.

**Immunogen:** The antiserum was produced against synthesized peptide derived from internal of human PHLDA3.

**Purification:** The antibody was affinity-purified from

rabbit antiserum by affinity-chromatography using epitope-specific immunogen.

**Specificity:** PHLDA3 antibody detects endogenous levels of total PHLDA3 protein.

**Reactivity:** Human (Identities = 100%, Positives = 100%);  
Mouse (Identities = 100%, Positives = 100%);  
Rat (Identities = 100%, Positives = 100%)

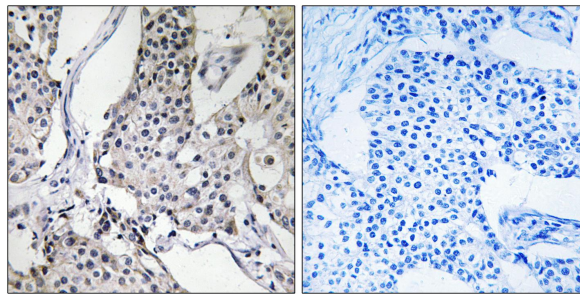
**Applications:** IHC: 1:50~1:100 ELISA: 1:40000

**References:**

Frank D., Mamm. Genome 10:1150-1159(1999).

Ota T., Nat. Genet. 36:40-45(2004).

The MGC Project Team, Genome Res. 14:2121-2127(2004).



Peptide -

+

Immunohistochemistry analysis of paraffin-embedded human breast carcinoma tissue using PHLDA3 antibody.