



Web: [www.anbobio.com](http://www.anbobio.com)  
[www.dijibio.com](http://www.dijibio.com)  
Order: [order@dijibio.com](mailto:order@dijibio.com)  
Tel: (86) 519 8805 0026

## LAMA2 Antibody [#C13065]

**Catalog Number:** C13065

**Concentration:** 1mg/ml

**Swiss-Prot No.:** P24043

**Other Names:** LAMM, laminin M, laminin alpha-2, merosin heavy chain

**Storage/Stability:** Store at -20°C/1 year

**Form of Antibody:** Rabbit IgG in phosphate buffered saline (without Mg<sup>2+</sup> and Ca<sup>2+</sup>), pH 7.4, 150mM NaCl, 0.02% sodium azide and 50% glycerol.

**Immunogen:** The antiserum was produced against synthesized peptide derived from internal of human LAMA2.

**Purification:** The antibody was affinity-purified from

rabbit antiserum by affinity-chromatography using epitope-specific immunogen.

**Specificity:** LAMA2 antibody detects endogenous levels of total LAMA2 protein.

**Reactivity:** Human (Identities = 100%, Positives = 100%);  
Mouse (Identities = 85%, Positives = 100%)

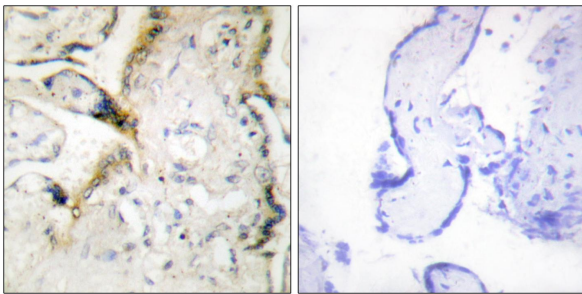
**Applications:** IHC: 1:50~1:100 IF: 1:100~1:500  
ELISA: 1:20000

**References:**

Vuolteenaho R., J. Cell Biol. 124:381-394(1994).

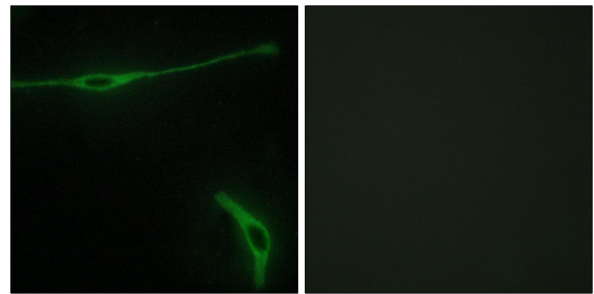
Ehrig K., . Natl. Acad. Sci. U.S.A. 87:3264-3268(1990).

Liu T., J. Proteome Res. 4:2070-2080(2005).



Peptide - +

Immunohistochemistry analysis of paraffin-embedded human placenta tissue using LAMA2 antibody.



Peptide - +

Immunofluorescence analysis of NIH/3T3 cells, using LAMA2 antibody.