



Web: www.anbobio.com
www.dijibio.com
Order: order@dijibio.com
Tel: (86) 519 8805 0026

LAMA4 Antibody [#C13067]

Catalog Number: C13067

Concentration: 1mg/ml

Swiss-Prot No.: Q16363

Other Names: Laminin subunit alpha-4 [Precursor], LAMA4

Storage/Stability: Store at -20°C/1 year

Form of Antibody: Rabbit IgG in phosphate buffered saline (without Mg²⁺ and Ca²⁺), pH 7.4, 150mM NaCl, 0.02% sodium azide and 50% glycerol.

Immunogen: The antiserum was produced against synthesized peptide derived from internal of human LAMA4.

Purification: The antibody was affinity-purified from rabbit antiserum by affinity-chromatography using epitope-specific immunogen.

Specificity: LAMA4 antibody detects endogenous levels of total LAMA4 protein.

Reactivity: Human, Mouse

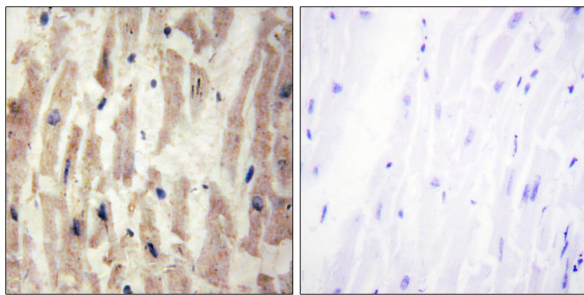
Applications: WB: 1:500~1:3000 IHC: 1:50~1:100
IF: 1:100~1:500 ELISA: 1:40000

References:

Iivanainen A., FEBS Lett. 365:183-188(1995).

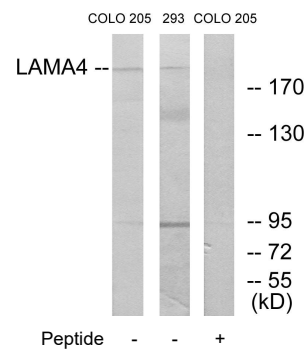
Richards A.J., Eur. J. Biochem. 238:813-821(1996).

Mungall A.J., Nature 425:805-811(2003).



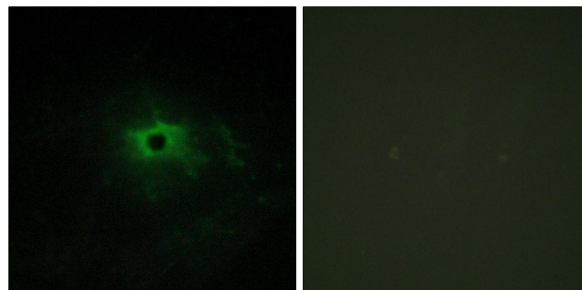
Peptide - +

Immunohistochemistry analysis of paraffin-embedded human heart tissue using LAMA4 antibody.



Peptide - - +

Western blot analysis of extracts from COLO cells and 293 cells, using LAMA4 antibody.



Peptide - +

Immunofluorescence analysis of NIH/3T3 cells, using LAMA4 antibody.