



Web: www.anbobio.com
www.dijibio.com
Order: order@dijibio.com
Tel: (86) 519 8805 0026

MRPS16 Antibody [#C14035]

Catalog Number: C14035

Concentration: 1mg/ml

Swiss-Prot No.: Q9Y3D3

Other Names: mitochondrial ribosomal protein S16;
MRP-S16; RPMS16; RT16; S16mt

Storage/Stability: Store at -20°C/1 year

Form of Antibody: Rabbit IgG in phosphate buffered saline (without Mg²⁺ and Ca²⁺), pH 7.4, 150mM NaCl, 0.02% sodium azide and 50% glycerol.

Immunogen: The antiserum was produced against synthesized peptide derived from internal of human MRPS16.

Purification: The antibody was affinity-purified from rabbit antiserum by affinity-chromatography using epitope-specific immunogen.

Specificity: MRPS16 antibody detects endogenous levels of total MRPS16 protein.

Reactivity: Human, Mouse

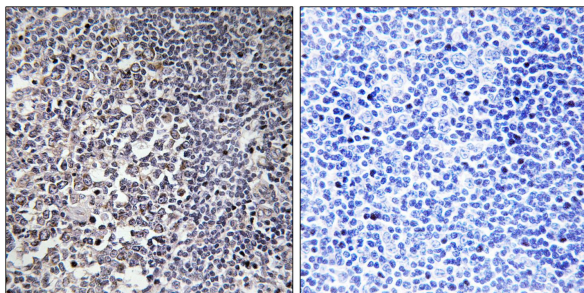
Applications: WB: 1:500~1:3000 IHC: 1:50~1:100
ELISA: 1:40000

References:

Lai C.-H., Genome Res. 10:703-713(2000).

Suzuki T., J. Biol. Chem. 276:33181-33195(2001).

Kenmochi N., Genomics 77:65-70(2001).

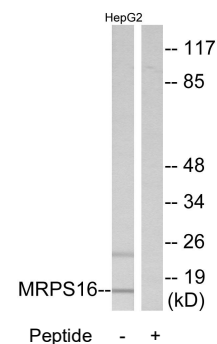


Peptide

-

+

Immunohistochemistry analysis of paraffin-embedded human tonsil tissue using MRPS16 antibody.



MRPS16

Peptide

-

+

Western blot analysis of extracts from HepG2 cells, using MRPS16 antibody.