



Web: www.anbobio.com
www.dijibio.com
Order: order@dijibio.com
Tel: (86) 519 8805 0026

MRPS18C Antibody [#C14039]

Catalog Number: C14039

Concentration: 1mg/ml

Swiss-Prot No.: Q9Y3D5

Other Names: 28S ribosomal protein S18c, mitochondrial; MRP-S18-1; MRP-S18-c; RT18C

Storage/Stability: Store at -20°C/1 year

Form of Antibody: Rabbit IgG in phosphate buffered saline (without Mg²⁺ and Ca²⁺), pH 7.4, 150mM NaCl, 0.02% sodium azide and 50% glycerol.

Immunogen: The antiserum was produced against synthesized peptide derived from internal of human MRPS18C.

Purification: The antibody was affinity-purified from

rabbit antiserum by affinity-chromatography using epitope-specific immunogen.

Specificity: MRPS18C antibody detects endogenous levels of total MRPS18C protein.

Reactivity: Human, Mouse

Applications: WB: 1:500~1:3000 IHC: 1:50~1:100

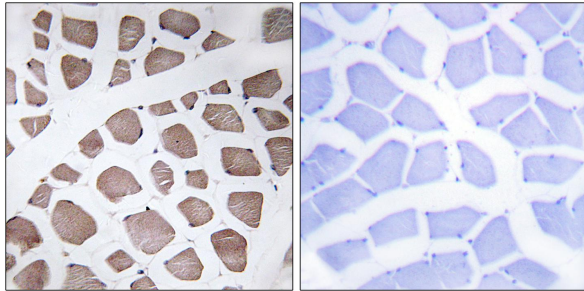
IF: 1:100~1:500 ELISA: 1:40000

References:

Lai C.-H., Genome Res. 10:703-713(2000).

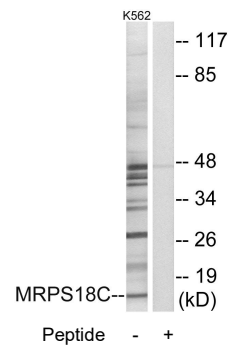
The MGC Project Team; Genome Res. 14:2121-2127(2004).

Koc E.C., J. Biol. Chem. 276:19363-19374(2001).

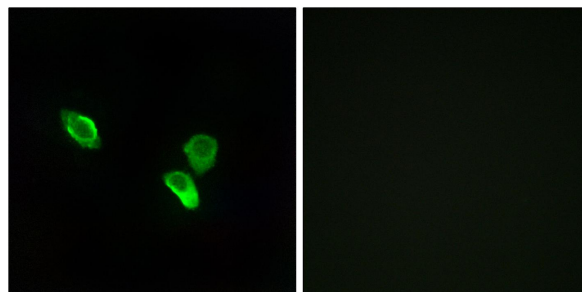


Peptide - +

Immunohistochemistry analysis of paraffin-embedded human skeletal muscle tissue using MRPS18C antibody.



Western blot analysis of extracts from K562 cells, using MRPS18C antibody.



Peptide - +

Immunofluorescence analysis of MCF-7 cells, using MRPS18C antibody.