



Web: www.anbio.com
www.dijibio.com
Order: order@dijibio.com
Tel: (86) 519 8805 0026

MRPL21 Antibody [#C14066]

Catalog Number: C14066

Concentration: 1mg/ml

Swiss-Prot No.: Q7Z2W9

Other Names: 39S ribosomal protein L21, mitochondrial; L21mt; RP-L21

Storage/Stability: Store at -20°C/1 year

Form of Antibody: Rabbit IgG in phosphate buffered saline (without Mg²⁺ and Ca²⁺), pH 7.4, 150mM NaCl, 0.02% sodium azide and 50% glycerol.

Immunogen: The antiserum was produced against synthesized peptide derived from internal of human MRPL21.

Purification: The antibody was affinity-purified from

rabbit antiserum by affinity-chromatography using epitope-specific immunogen.

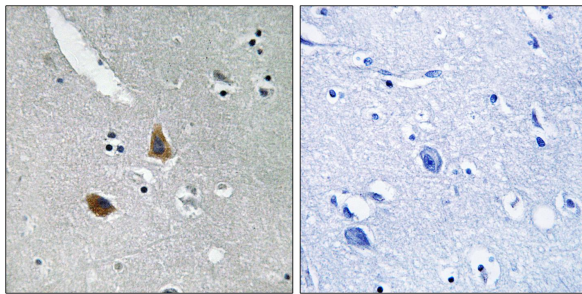
Specificity: MRPL21 antibody detects endogenous levels of total MRPL21 protein.

Reactivity: Human (Identities = 100%, Positives = 100%);
Mouse (Identities = 82%, Positives = 94%)

Applications: WB: 1:500~1:3000 IHC: 1:50~1:100
ELISA: 1:40000

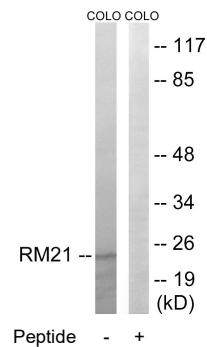
References:

The MGC Project Team; Genome Res. 14:2121-2127(2004).
Colinge J., Submitted (OCT-2008) to UniProtKB.



Peptide - +

Immunohistochemistry analysis of paraffin-embedded human brain tissue using MRPL21 antibody.



Western blot analysis of extracts from COLO cells, using MRPL21 antibody.