



Web: www.anbobio.com
www.dijibio.com
Order: order@dijibio.com
Tel: (86) 519 8805 0026

MRPL24 Antibody [#C14068]

Catalog Number: C14068

Concentration: 1mg/ml

Swiss-Prot No.: Q96A35

Other Names: 39S ribosomal protein L24, mitochondrial precursor; RM24

Storage/Stability: Store at -20°C/1 year

Form of Antibody: Rabbit IgG in phosphate buffered saline (without Mg²⁺ and Ca²⁺), pH 7.4, 150mM NaCl, 0.02% sodium azide and 50% glycerol.

Immunogen: The antiserum was produced against synthesized peptide derived from internal of human MRPL24.

Purification: The antibody was affinity-purified from

rabbit antiserum by affinity-chromatography using epitope-specific immunogen.

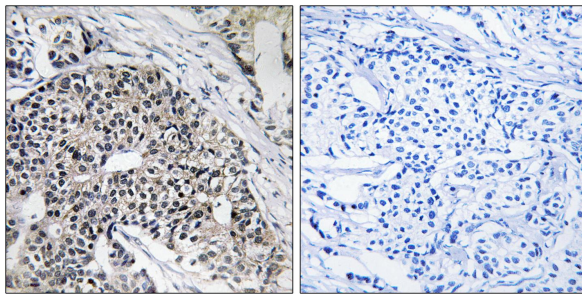
Specificity: MRPL24 antibody detects endogenous levels of total MRPL24 protein.

Reactivity: Human (Identities = 100%, Positives = 100%);
Mouse (Identities = 85%, Positives = 100%);
Rat (Identities = 85%, Positives = 100%)

Applications: WB: 1:500~1:3000 IHC: 1:50~1:100
ELISA: 1:40000

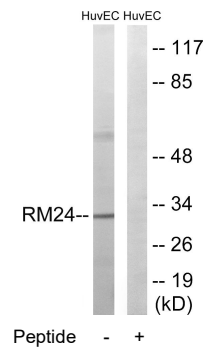
References:

Kenmochi N., Genomics 77:65-70(2001).
Woodfine K., Nature 441:315-321(2006).
Ota T., Nat. Genet. 36:40-45(2004).



Peptide - +

Immunohistochemistry analysis of paraffin-embedded human breast carcinoma tissue using MRPL24 antibody.



Western blot analysis of extracts from HUVEC cells, using MRPL24 antibody.