



**Web:** [www.anbobio.com](http://www.anbobio.com)  
[www.dijibio.com](http://www.dijibio.com)  
**Order:** [order@dijibio.com](mailto:order@dijibio.com)  
**Tel:** (86) 519 8805 0026

## MRPL32 Antibody [#C14071]

**Catalog Number:** C14071

**Concentration:** 1mg/ml

**Swiss-Prot No.:** Q9BYC8

**Other Names:** 39S ribosomal protein L32, mitochondrial [Precursor]; L32mt; MRP-L32; HSPC283

**Storage/Stability:** Store at -20°C/1 year

**Form of Antibody:** Rabbit IgG in phosphate buffered saline (without Mg<sup>2+</sup> and Ca<sup>2+</sup>), pH 7.4, 150mM NaCl, 0.02% sodium azide and 50% glycerol.

**Immunogen:** The antiserum was produced against synthesized peptide derived from internal of human MRPL32.

**Purification:** The antibody was affinity-purified from

rabbit antiserum by affinity-chromatography using epitope-specific immunogen.

**Specificity:** MRPL32 antibody detects endogenous levels of total MRPL32 protein.

**Reactivity:** Human

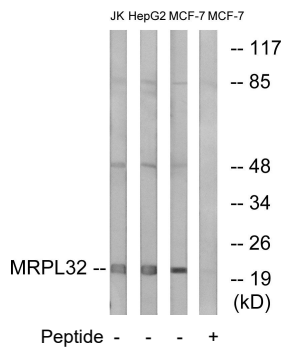
**Applications:** WB: 1:500~1:3000 IF: 1:100~1:500  
ELISA: 1:40000

**References:**

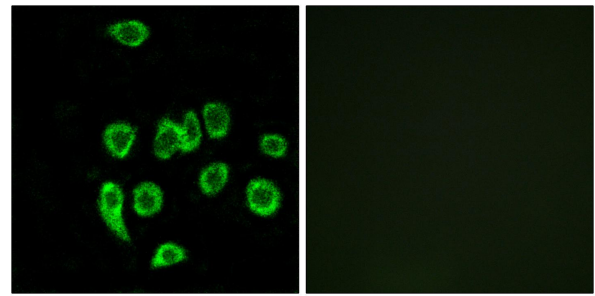
Suzuki T., J. Biol. Chem. 276:21724-21736(2001).

The MGC Project Team; Genome Res. 14:2121-2127(2004).

Kenmochi N., Genomics 77:65-70(2001).



Western blot analysis of extracts from Jurkat cells, MCF-7 cells and HepG2 cells, using MRPL32 antibody.



Immunofluorescence analysis of A549 cells, using MRPL32 antibody.