



Web: [www.anbobio.com](http://www.anbobio.com)

[www.dijibio.com](http://www.dijibio.com)

Order: [order@dijibio.com](mailto:order@dijibio.com)

Tel: (86) 519 8805 0026

## RPS25 Antibody [#C14110]

**Catalog Number:** C14110

**Concentration:** 1mg/ml

**Swiss-Prot No.:** P62851

**Other Names:** 40S ribosomal protein S25

**Storage/Stability:** Store at -20°C/1 year

**Form of Antibody:** Rabbit IgG in phosphate buffered saline (without Mg<sup>2+</sup> and Ca<sup>2+</sup>), pH 7.4, 150mM NaCl, 0.02% sodium azide and 50% glycerol.

**Immunogen:** The antiserum was produced against synthesized peptide derived from internal of human RPS25.

**Purification:** The antibody was affinity-purified from

rabbit antiserum by affinity-chromatography using epitope-specific immunogen.

**Specificity:** RPS25 antibody detects endogenous levels of total RPS25 protein.

**Reactivity:** Human (Identities = 100%, Positives = 100%);  
Mouse (Identities = 100%, Positives = 100%);  
Rat (Identities = 100%, Positives = 100%)

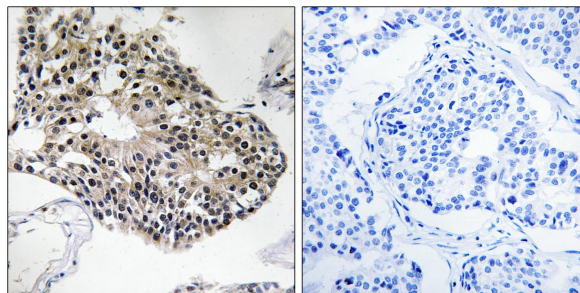
**Applications:** IHC: 1:50~1:100 ELISA: 1:10000

**References:**

Yoshihama M., Genome Res. 12:379-390(2002).

Li M., Gene 107:329-333(1991).

Vladimirov S.N., Eur. J. Biochem. 239:144-149(1996).



Peptide

-

+

Immunohistochemistry analysis of paraffin-embedded human breast carcinoma tissue using RPS25 antibody.