



Web: www.anbobio.com
www.dijibio.com
Order: order@dijibio.com
Tel: (86) 519 8805 0026

RPS3 Antibody [#C14118]

Catalog Number: C14118

Concentration: 1mg/ml

Swiss-Prot No.: P23396

Other Names: 40S ribosomal protein S3; RS3

Storage/Stability: Store at -20°C/1 year

Form of Antibody: Rabbit IgG in phosphate buffered saline (without Mg²⁺ and Ca²⁺), pH 7.4, 150mM NaCl, 0.02% sodium azide and 50% glycerol.

Immunogen: The antiserum was produced against synthesized peptide derived from internal of human RPS3.

Purification: The antibody was affinity-purified from rabbit antiserum by affinity-chromatography using epitope-specific immunogen.

Specificity: RPS3 antibody detects endogenous levels of total RPS3 protein.

Reactivity: Human (Identities = 100%, Positives = 100%);
Mouse (Identities = 100%, Positives = 100%);
Rat (Identities = 100%, Positives = 100%)

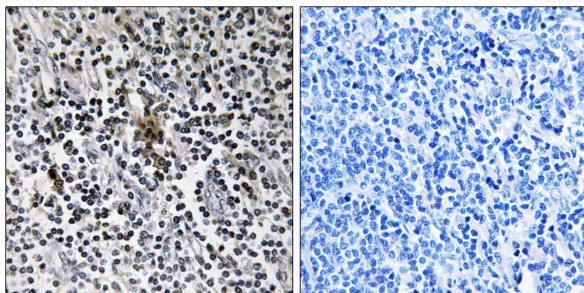
Applications: WB: 1:500~1:3000 IHC: 1:50~1:100
ELISA: 1:40000

References:

Yoshihama M., *Genome Res.* 12:379-390(2002).

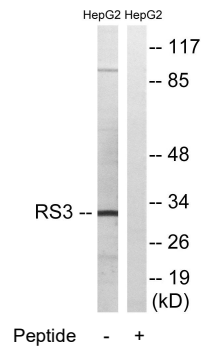
Nousiainen M., *Proc. Natl. Acad. Sci. U.S.A.* 103:5391-5396(2006).

Molina H., *Proc. Natl. Acad. Sci. U.S.A.* 104:2199-2204(2007).



Peptide - +

Immunohistochemistry analysis of paraffin-embedded human tonsil tissue using RPS3 antibody.



Peptide - +

Western blot analysis of extracts from HepG2 cells, using RPS3 antibody.