



**Web:** [www.anbobio.com](http://www.anbobio.com)  
[www.dijibio.com](http://www.dijibio.com)  
**Order:** [order@dijibio.com](mailto:order@dijibio.com)  
**Tel:** (86) 519 8805 0026

## RPS4Y1 Antibody [#C14122]

**Catalog Number:** C14122

**Concentration:** 1mg/ml

**Swiss-Prot No.:** P22090

**Other Names:** 40S ribosomal protein S4, Y isoform 1; RPS4Y; RS4Y1

**Storage/Stability:** Store at -20°C/1 year

**Form of Antibody:** Rabbit IgG in phosphate buffered saline (without Mg<sup>2+</sup> and Ca<sup>2+</sup>), pH 7.4, 150mM NaCl, 0.02% sodium azide and 50% glycerol.

**Immunogen:** The antiserum was produced against synthesized peptide derived from C-terminal of human RPS4Y1.

**Purification:** The antibody was affinity-purified from

rabbit antiserum by affinity-chromatography using epitope-specific immunogen.

**Specificity:** RPS4Y1 antibody detects endogenous levels of total RPS4Y1 protein.

**Reactivity:** Human

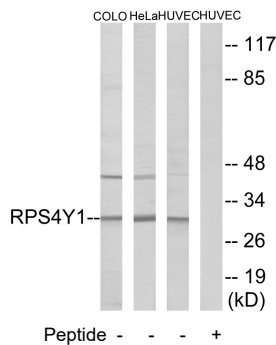
**Applications:** WB: 1:500~1:3000 IF: 1:100~1:500  
ELISA: 1:20000

**References:**

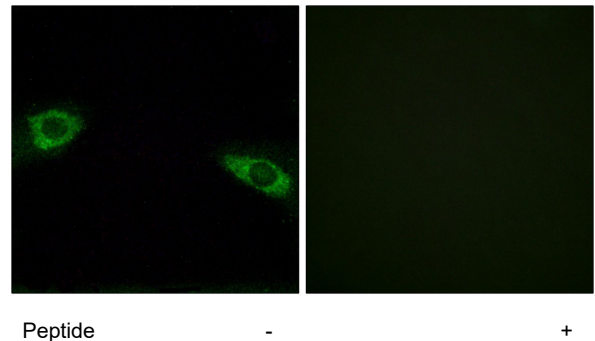
Fisher E.M.C., Cell 63:1205-1218(1990).

Zuo L., Submitted (JAN-1998) to the EMBL/GenBank/DDBJ databases.

Zhang C., Submitted (DEC-1998) to the EMBL/GenBank/DDBJ databases.



Western blot analysis of extracts from COLO cells, HeLa cells and HUVEC cells, using RPS4Y1 antibody.



Immunofluorescence analysis of HuvEc cells, using RPS4Y1 antibody.