



**Web:** [www.anbobio.com](http://www.anbobio.com)  
[www.dijibio.com](http://www.dijibio.com)  
**Order:** [order@dijibio.com](mailto:order@dijibio.com)  
**Tel:** (86) 519 8805 0026

## MP68 Antibody [#C14139]

**Catalog Number:** C14139

**Concentration:** 1mg/ml

**Swiss-Prot No.:** P56378

**Other Names:** 6.8 kDa mitochondrial proteolipid

**Storage/Stability:** Store at -20°C/1 year

**Form of Antibody:** Rabbit IgG in phosphate buffered saline (without Mg<sup>2+</sup> and Ca<sup>2+</sup>), pH 7.4, 150mM NaCl, 0.02% sodium azide and 50% glycerol.

**Immunogen:** The antiserum was produced against synthesized peptide derived from internal of human MP68.

**Purification:** The antibody was affinity-purified from

rabbit antiserum by affinity-chromatography using epitope-specific immunogen.

**Specificity:** MP68 antibody detects endogenous levels of total MP68 protein.

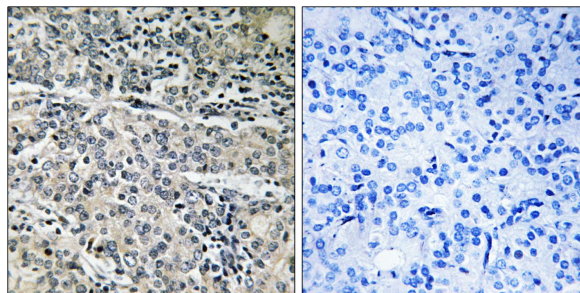
**Reactivity:** Human (Identities = 100%, Positives = 100%);  
Mouse (Identities = 92%, Positives = 100%)

**Applications:** IHC: 1:50~1:100 ELISA: 1:20000

**References:**

Li W.B., Submitted (JAN-2003) to the EMBL/GenBank/DDBJ databases.

Mao M., Proc. Natl. Acad. Sci. U.S.A. 95:8175-8180(1998).



Peptide

-

+

Immunohistochemistry analysis of paraffin-embedded human prostate carcinoma tissue using MP68 antibody.