



Web: www.anbobio.com
www.dijibio.com
Order: order@dijibio.com
Tel: (86) 519 8805 0026

RPL11 Antibody [#C14147]

Catalog Number: C14147

Concentration: 1mg/ml

Swiss-Prot No.: P62913

Other Names: 60S ribosomal protein L11; cell growth-inhibiting protein 34; CLL-associated antigen KW-12; DBA7; GIG34; ribosomal protein L11; RL11; RPL11

Storage/Stability: Store at -20°C/1 year

Form of Antibody: Rabbit IgG in phosphate buffered saline (without Mg²⁺ and Ca²⁺), pH 7.4, 150mM NaCl, 0.02% sodium azide and 50% glycerol.

Immunogen: The antiserum was produced against synthesized peptide derived from C-terminal of human RPL11.

Purification: The antibody was affinity-purified from rabbit antiserum by affinity-chromatography using epitope-specific immunogen.

Specificity: RPL11 antibody detects endogenous levels of total RPL11 protein.

Reactivity: Human; Mouse; Rat

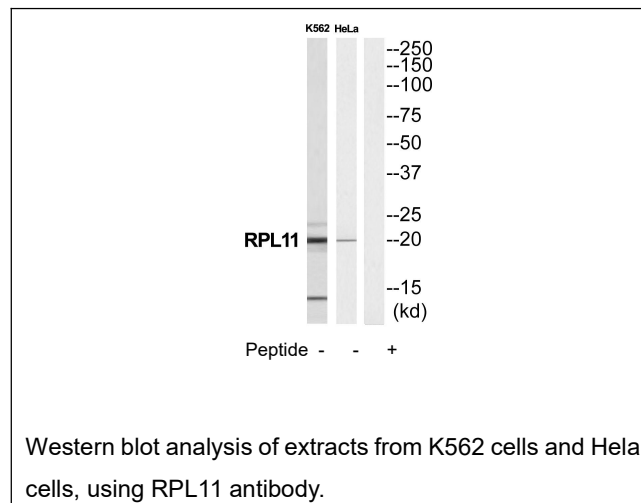
Applications: WB: 1:500~1:3000 ELISA: 1:10000

References:

Mishin V.P., Bioorg. Khim. 21:158-160(1995).

Voronina E.N., Mol. Biol. (Mosk.) 37:425-435(2003).

Krackhardt A.M., Submitted (OCT-2001) to the EMBL/GenBank/DDBJ databases.



For Research Use Only