



Web: www.anbobio.com
www.dijibio.com
Order: order@dijibio.com
Tel: (86) 519 8805 0026

RPS18 Antibody [#C14102]

Catalog Number: C14102

Concentration: 1mg/ml

Swiss-Prot No.: P62269

Other Names: 40S ribosomal protein S18; D6S218E; HKE3; Ke-3; Ke3; MGC117351; MGC126835; MGC126837; rhabdomyosarcoma antigen

MU-RMS-40.21; ribosomal protein S18; RPS18; RS18

Storage/Stability: Store at -20°C/1 year

Form of Antibody: Rabbit IgG in phosphate buffered saline (without Mg²⁺ and Ca²⁺), pH 7.4, 150mM NaCl, 0.02% sodium azide and 50% glycerol.

Immunogen: The antiserum was produced against synthesized peptide derived from Internal of human

RPS18.

Purification: The antibody was affinity-purified from rabbit antiserum by affinity-chromatography using epitope-specific immunogen.

Specificity: RPS18 antibody detects endogenous levels of total RPS18 protein.

Reactivity: Human; Mouse; Rat

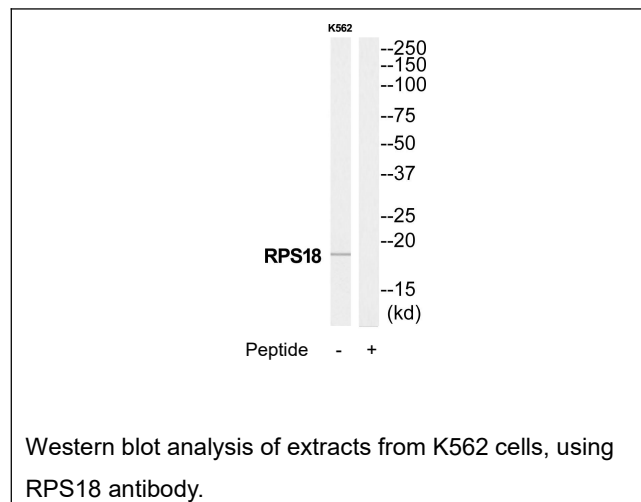
Applications: WB: 1:500~1:3000 ELISA: 1:20000

References:

Chassin D., Nucleic Acids Res. 21:745-745(1993).

Mungall A.J., Nature 425:805-811(2003).

Vladimirov S.N., Eur. J. Biochem. 239:144-149(1996).



For Research Use Only