



Web: www.anbobio.com
www.dijibio.com
Order: order@dijibio.com
Tel: (86) 519 8805 0026

RPS19 Antibody [#C14103]

Catalog Number: C14103

Concentration: 1mg/ml

Swiss-Prot No.: P39019

Other Names: 40S ribosomal protein S19

Storage/Stability: Store at -20°C/1 year

Form of Antibody: Rabbit IgG in phosphate buffered saline (without Mg²⁺ and Ca²⁺), pH 7.4, 150mM NaCl, 0.02% sodium azide and 50% glycerol.

Immunogen: The antiserum was produced against synthesized peptide derived from internal of human RPS19.

Purification: The antibody was affinity-purified from rabbit antiserum by affinity-chromatography using

epitope-specific immunogen.

Specificity: RPS19 antibody detects endogenous levels of total RPS19 protein.

Reactivity: Human (Identities = 100%, Positives = 100%);
Mouse (Identities = 100%, Positives = 100%);
Rat (Identities = 100%, Positives = 100%)

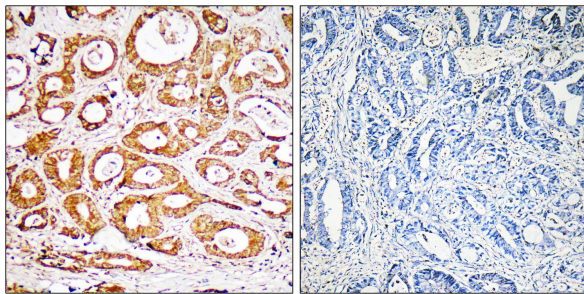
Applications: WB: 1:500~1:3000 IHC: 1:50~1:100
ELISA: 1:10000

References:

Kondoh N., Cancer Res. 52:791-796(1992).

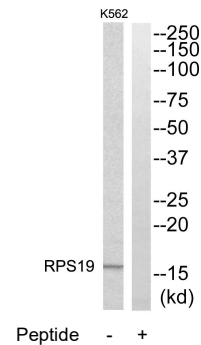
Draptchinskaia N., Nat. Genet. 21:169-175(1999).

Vladimirov S.N., Eur. J. Biochem. 239:144-149(1996).



Peptide - +

Immunohistochemistry analysis of paraffin-embedded human colon carcinoma tissue, using RPS19 antibody.



Western blot analysis of extracts from K562 cells, using RPS19 antibody.