



Web: [www.anbobio.com](http://www.anbobio.com)  
[www.dijibio.com](http://www.dijibio.com)  
Order: [order@dijibio.com](mailto:order@dijibio.com)  
Tel: (86) 519 8805 0026

## RPS19BP1 Antibody [#C14104]

**Catalog Number:** C14104

**Concentration:** 1mg/ml

**Swiss-Prot No.:** Q86WX3

**Other Names:** 40S ribosomal protein S19-binding protein 1; RPS19-binding protein 1; S19BP

**Storage/Stability:** Store at -20°C/1 year

**Form of Antibody:** Rabbit IgG in phosphate buffered saline (without Mg<sup>2+</sup> and Ca<sup>2+</sup>), pH 7.4, 150mM NaCl, 0.02% sodium azide and 50% glycerol.

**Immunogen:** The antiserum was produced against synthesized peptide derived from internal of human RPS19BP1.

**Purification:** The antibody was affinity-purified from rabbit antiserum by affinity-chromatography using epitope-specific immunogen.

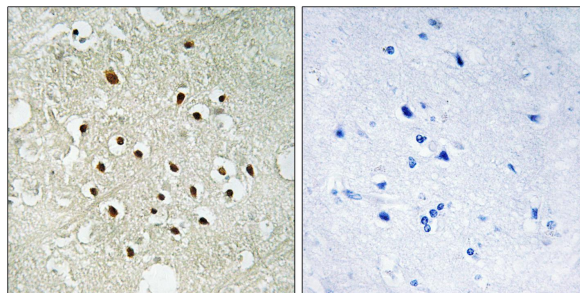
**Specificity:** RPS19BP1 antibody detects endogenous levels of total RPS19BP1 protein.

**Reactivity:** Human (Identities = 100%, Positives = 100%);  
Mouse (Identities = 84%, Positives = 100%)

**Applications:** IHC: 1:50~1:100    ELISA: 1:10000

**References:**

Collins J.E., Genome Biol. 5:RESEARCH84.1-RESEARCH84.11(2004).  
Dunham I., Nature 402:489-495(1999).



Peptide                      -                      +

Immunohistochemistry analysis of paraffin-embedded human brain tissue using RPS19BP1 antibody.