



Web: www.anbobio.com
www.dijibio.com
Order: order@dijibio.com
Tel: (86) 519 8805 0026

RPL22 Antibody [#C14158]

Catalog Number: C14158

Concentration: 1mg/ml

Swiss-Prot No.: P35268

Other Names: 60S ribosomal protein L22; Epstein-Barr virus small RNA-associated protein; EBER-associated protein; EAP; Heparin-binding protein HBp15

Storage/Stability: Store at -20°C/1 year

Form of Antibody: Rabbit IgG in phosphate buffered saline (without Mg²⁺ and Ca²⁺), pH 7.4, 150mM NaCl, 0.02% sodium azide and 50% glycerol.

Immunogen: The antiserum was produced against synthesized peptide derived from internal of human RPL22.

Purification: The antibody was affinity-purified from rabbit antiserum by affinity-chromatography using epitope-specific immunogen.

Specificity: RPL22 antibody detects endogenous levels of total RPL22 protein.

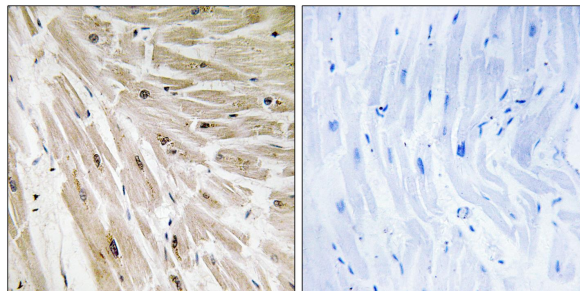
Reactivity: Human (Identities = 100%, Positives = 100%);
Mouse (Identities = 100%, Positives = 100%);
Rat (Identities = 94%, Positives = 94%)

Applications: IHC: 1:50~1:100 ELISA: 1:10000

References:

Fujita Y., Biochem. Biophys. Res. Commun. 199:706-713(1994).

Toczyski D.P.W., EMBO J. 10:459-466(1991).



Peptide - +

Immunohistochemistry analysis of paraffin-embedded human heart tissue using RPL22 antibody.