



**Web:** [www.anbobio.com](http://www.anbobio.com)  
[www.dijibio.com](http://www.dijibio.com)  
**Order:** [order@dijibio.com](mailto:order@dijibio.com)  
**Tel:** (86) 519 8805 0026

## RPL27A Antibody [#C14165]

**Catalog Number:** C14165

**Concentration:** 1mg/ml

**Swiss-Prot No.:** P46776

**Other Names:** MGC87238; RL27A

**Storage/Stability:** Store at -20°C/1 year

**Form of Antibody:** Rabbit IgG in phosphate buffered saline (without Mg<sup>2+</sup> and Ca<sup>2+</sup>), pH 7.4, 150mM NaCl, 0.02% sodium azide and 50% glycerol.

**Immunogen:** The antiserum was produced against synthesized peptide derived from C-terminal of human RPL27A.

**Purification:** The antibody was affinity-purified from

rabbit antiserum by affinity-chromatography using epitope-specific immunogen.

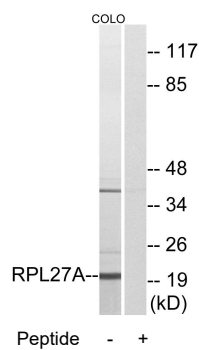
**Specificity:** RPL27A antibody detects endogenous levels of total RPL27A protein.

**Reactivity:** Human, Mouse, Rat

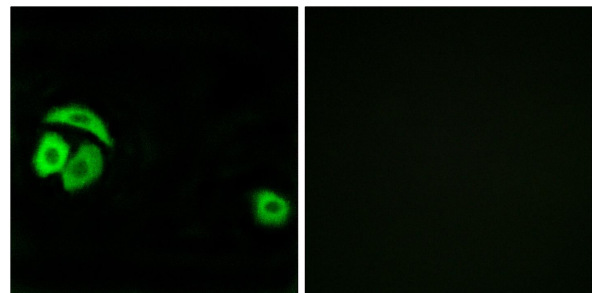
**Applications:** WB: 1:500~1:3000 IF: 1:100~1:500  
ELISA: 1:40000

**References:**

Frigerio J.-M., *Biochim. Biophys. Acta* 1262:64-68(1995).  
Kusuda J., *Cytogenet. Cell Genet.* 85:248-251(1999).  
The MGC Project Team; *Genome Res.* 14:2121-2127(2004).



Western blot analysis of extracts from COLO cells, using RPL27A antibody.



Immunofluorescence analysis of A549 cells, using RPL27A antibody.