



Web: www.anbobio.com
www.dijibio.com
Order: order@dijibio.com
Tel: (86) 519 8805 0026

RPL3 Antibody [#C14168]

Catalog Number: C14168

Concentration: 1mg/ml

Swiss-Prot No.: P39023

Other Names: 60S ribosomal protein L3; HIV-1 TAR RNA binding protein B; RL3; RPL3; TARBP-B

Storage/Stability: Store at -20°C/1 year

Form of Antibody: Rabbit IgG in phosphate buffered saline (without Mg²⁺ and Ca²⁺), pH 7.4, 150mM NaCl, 0.02% sodium azide and 50% glycerol.

Immunogen: The antiserum was produced against synthesized peptide derived from internal of human RPL3.

Purification: The antibody was affinity-purified from rabbit antiserum by affinity-chromatography using

epitope-specific immunogen.

Specificity: RPL3 antibody detects endogenous levels of total RPL3 protein.

Reactivity: Human, Mouse, Rat

Applications: WB: 1:500~1:3000 IHC: 1:50~1:100

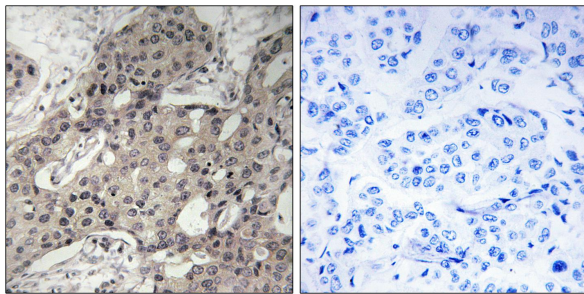
ELISA: 1:5000

References:

Leffers H.; Submitted (JUN-1993) to the EMBL/GenBank/DDBJ databases.

Shichijo S., Submitted (MAY-2001) to the EMBL/GenBank/DDBJ databases.

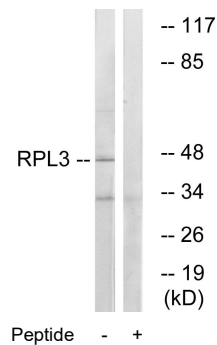
Collins J.E., Genome Biol. 5:RESEARCH84.1-RESEARCH84.11(2004).



Peptide -

+

Immunohistochemistry analysis of paraffin-embedded human breast carcinoma tissue using RPL3 antibody.



Peptide -

+

Western blot analysis of extracts from HT-29 cells, using RPL3 antibody.