



**Web:** [www.anbobio.com](http://www.anbobio.com)  
[www.dijibio.com](http://www.dijibio.com)  
**Order:** [order@dijibio.com](mailto:order@dijibio.com)  
**Tel:** (86) 519 8805 0026

## RPL30 Antibody [#C14169]

**Catalog Number:** C14169

**Concentration:** 1mg/ml

**Swiss-Prot No.:** P62888

**Other Names:** 60S ribosomal protein L30; RL30

**Storage/Stability:** Store at -20°C/1 year

**Form of Antibody:** Rabbit IgG in phosphate buffered saline (without Mg<sup>2+</sup> and Ca<sup>2+</sup>), pH 7.4, 150mM NaCl, 0.02% sodium azide and 50% glycerol.

**Immunogen:** The antiserum was produced against synthesized peptide derived from internal of human RPL30.

**Purification:** The antibody was affinity-purified from rabbit antiserum by affinity-chromatography using

epitope-specific immunogen.

**Specificity:** RPL30 antibody detects endogenous levels of total RPL30 protein.

**Reactivity:** Human (Identities = 100%, Positives = 100%);  
Mouse (Identities = 100%, Positives = 100%);  
Rat (Identities = 100%, Positives = 100%)

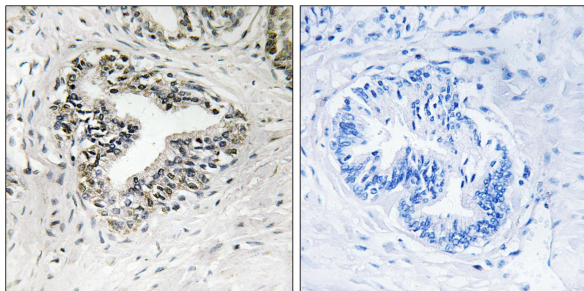
**Applications:** WB: 1:500~1:3000 IHC: 1:50~1:100  
ELISA: 1:40000

**References:**

Beausoleil S.A., Nat. Biotechnol. 24:1285-1292(2006).

Yoshihama M., Genome Res. 12:379-390(2002).

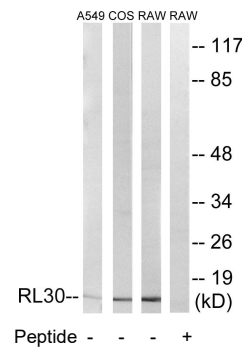
The MGC Project Team; Genome Res. 14:2121-2127(2004).



Peptide -

+

Immunohistochemistry analysis of paraffin-embedded human prostate carcinoma tissue using RPL30 antibody.



Western blot analysis of extracts from A549 cells, COS-7 cells and RAW264.7 cells, using RPL30 antibody.