



Web: www.anbobio.com
www.dijibio.com
Order: order@dijibio.com
Tel: (86) 519 8805 0026

RPL36 Antibody [#C14175]

Catalog Number: C14175

Concentration: 1mg/ml

Swiss-Prot No.: Q9Y3U8

Other Names: 60S ribosomal protein L36

Storage/Stability: Store at -20°C/1 year

Form of Antibody: Rabbit IgG in phosphate buffered saline (without Mg²⁺ and Ca²⁺), pH 7.4, 150mM NaCl, 0.02% sodium azide and 50% glycerol.

Immunogen: The antiserum was produced against synthesized peptide derived from internal of human RPL36.

Purification: The antibody was affinity-purified from

rabbit antiserum by affinity-chromatography using epitope-specific immunogen.

Specificity: RPL36 antibody detects endogenous levels of total RPL36 protein.

Reactivity: Human, Mouse, Rat

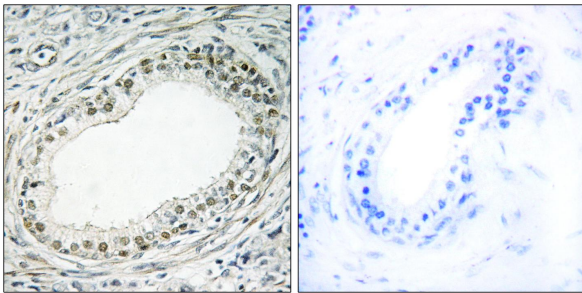
Applications: WB: 1:500~1:3000 IHC: 1:50~1:100
IF: 1:100~1:500 ELISA: 1:40000

References:

Yoshihama M., Genome Res. 12:379-390(2002).

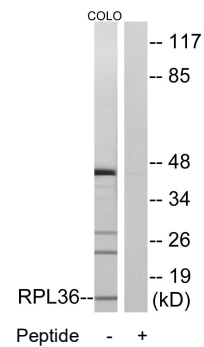
Wiemann S., Genome Res. 11:422-435(2001).

Zhang Q.-H., Genome Res. 10:1546-1560(2000).



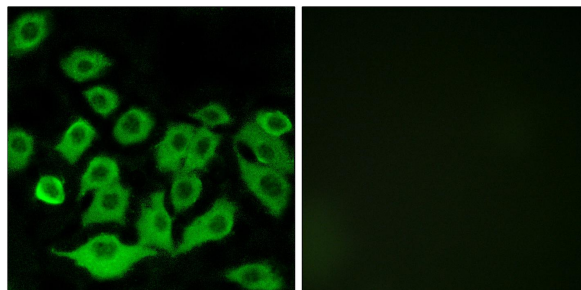
Peptide - +

Immunohistochemistry analysis of paraffin-embedded human prostate carcinoma tissue using RPL36 antibody.



Peptide - +

Western blot analysis of extracts from COLO cells, using RPL36 antibody.



Peptide - +

Immunofluorescence analysis of A549 cells, using RPL36 antibody.