



Web: [www.anbobio.com](http://www.anbobio.com)  
[www.dijibio.com](http://www.dijibio.com)  
Order: [order@dijibio.com](mailto:order@dijibio.com)  
Tel: (86) 519 8805 0026

## RPL39 Antibody [#C14181]

**Catalog Number:** C14181

**Concentration:** 1mg/ml

**Swiss-Prot No.:** P62891

**Other Names:** 60S ribosomal protein L39; RPL39

**Storage/Stability:** Store at -20°C/1 year

**Form of Antibody:** Rabbit IgG in phosphate buffered saline (without Mg<sup>2+</sup> and Ca<sup>2+</sup>), pH 7.4, 150mM NaCl, 0.02% sodium azide and 50% glycerol.

**Immunogen:** The antiserum was produced against synthesized peptide derived from internal of human RPL39.

**Purification:** The antibody was affinity-purified from

rabbit antiserum by affinity-chromatography using epitope-specific immunogen.

**Specificity:** RPL39 antibody detects endogenous levels of total RPL39 protein.

**Reactivity:** Human, Mouse, Rat

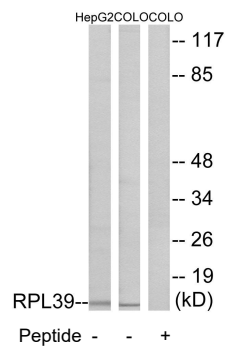
**Applications:** WB: 1:500~1:3000 IF: 1:100~1:500  
ELISA: 1:60000

**References:**

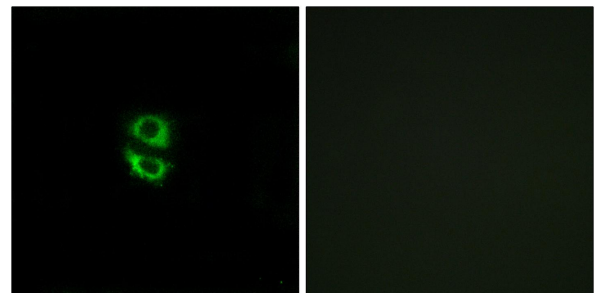
Tsui S.K.W., Biochem. Mol. Biol. Int. 40:611-616(1996).

Otsuka S., Biochim. Biophys. Acta 1308:119-121(1996).

Yoshihama M., Genome Res. 12:379-390(2002).



Western blot analysis of extracts from HepG2 cells and COLO cells, using RPL39 antibody.



Immunofluorescence analysis of A549 cells, using RPL39 antibody.