



**Web:** [www.anbobio.com](http://www.anbobio.com)  
[www.dijibio.com](http://www.dijibio.com)  
**Order:** [order@dijibio.com](mailto:order@dijibio.com)  
**Tel:** (86) 519 8805 0026

## RL39L Antibody [#C14182]

**Catalog Number:** C14182

**Concentration:** 1mg/ml

**Swiss-Prot No.:** Q96EH5

**Other Names:** 60S ribosomal protein L39-like; L39-2

**Storage/Stability:** Store at -20°C/1 year

**Form of Antibody:** Rabbit IgG in phosphate buffered saline (without Mg<sup>2+</sup> and Ca<sup>2+</sup>), pH 7.4, 150mM NaCl, 0.02% sodium azide and 50% glycerol.

**Immunogen:** The antiserum was produced against synthesized peptide derived from internal of human RL39L.

**Purification:** The antibody was affinity-purified from

rabbit antiserum by affinity-chromatography using epitope-specific immunogen.

**Specificity:** RL39L antibody detects endogenous levels of total RL39L protein.

**Reactivity:** Human (Identities = 100%, Positives = 100%)

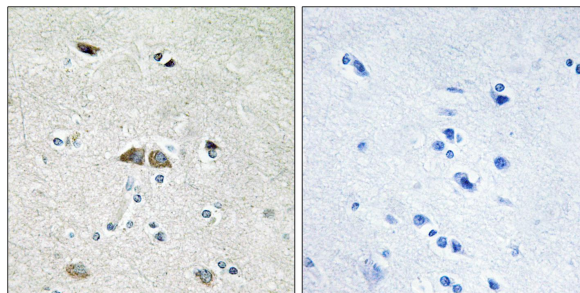
**Applications:** IHC: 1:50~1:100 ELISA: 1:40000

**References:**

Nadano D., Biochim. Biophys. Acta 1577:430-436(2002).

Uechi T., Nucleic Acids Res. 30:5369-5375(2002).

The MGC Project Team; Genome Res. 14:2121-2127(2004).



Peptide

-

+

Immunohistochemistry analysis of paraffin-embedded human brain tissue using RL39L antibody.