



Web: www.anbobio.com
www.dijibio.com
Order: order@dijibio.com
Tel: (86) 519 8805 0026

RPL40 Antibody [#C14185]

Catalog Number: C14185

Concentration: 1mg/ml

Swiss-Prot No.: P62987

Other Names: 60S ribosomal protein L40; CEP52

Storage/Stability: Store at -20°C/1 year

Form of Antibody: Rabbit IgG in phosphate buffered saline (without Mg²⁺ and Ca²⁺), pH 7.4, 150mM NaCl, 0.02% sodium azide and 50% glycerol.

Immunogen: The antiserum was produced against synthesized peptide derived from internal of human RPL40.

Purification: The antibody was affinity-purified from rabbit antiserum by affinity-chromatography using

epitope-specific immunogen.

Specificity: RPL40 antibody detects endogenous levels of total RPL40 protein.

Reactivity: Human (Identities = 100%, Positives = 100%);
Mouse (Identities = 100%, Positives = 100%);
Rat (Identities = 100%, Positives = 100%)

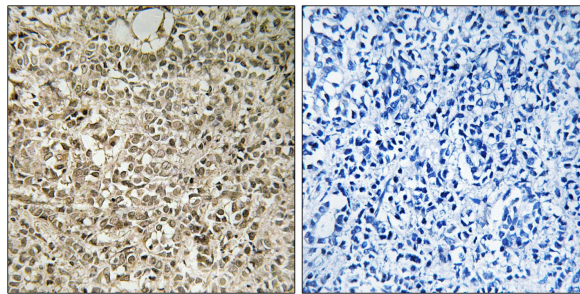
Applications: IHC: 1:50~1:100 ELISA: 1:40000

References:

Baker R.T., Nucleic Acids Res. 19:1035-1040(1991).

Wang H., Submitted (FEB-2001) to the EMBL/GenBank/DDBJ databases.

Grimwood J., Nature 428:529-535(2004).



Peptide

-

+

Immunohistochemistry analysis of paraffin-embedded human breast carcinoma tissue using RPL40 antibody.