



Web: www.anbobio.com
www.dijibio.com
Order: order@dijibio.com
Tel: (86) 519 8805 0026

PGLS Antibody [#C14200]

Catalog Number: C14200

Concentration: 1mg/ml

Swiss-Prot No.: O95336

Other Names: 6-phosphogluconolactonase; EC 3.1.1.31;
6PGL

Storage/Stability: Store at -20°C/1 year

Form of Antibody: Rabbit IgG in phosphate buffered saline (without Mg²⁺ and Ca²⁺), pH 7.4, 150mM NaCl, 0.02% sodium azide and 50% glycerol.

Immunogen: The antiserum was produced against synthesized peptide derived from internal of human PGLS.

Purification: The antibody was affinity-purified from

rabbit antiserum by affinity-chromatography using epitope-specific immunogen.

Specificity: PGLS antibody detects endogenous levels of total PGLS protein.

Reactivity: Human (Identities = 100%, Positives = 100%)

Applications: WB: 1:500~1:3000 IHC: 1:50~1:100

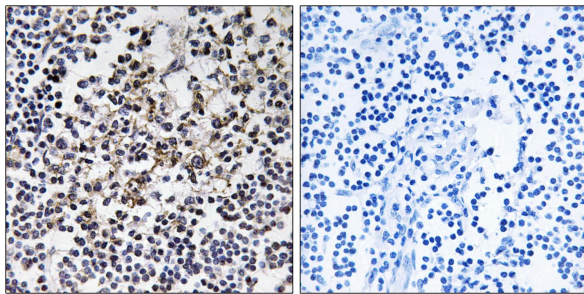
ELISA: 1:40000

References:

Collard F., FEBS Lett. 459:223-226(1999).

The MGC Project Team, Genome Res. 14:2121-2127(2004).

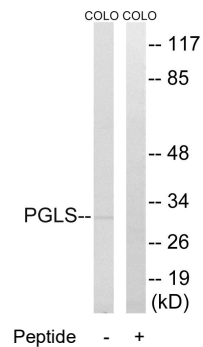
Barrow I.K.-P., Submitted (AUG-1998) to the EMBL/GenBank/DDBJ databases.



Peptide -

+

Immunohistochemistry analysis of paraffin-embedded human lymph node tissue, using PGLS antibody.



Peptide -

+

Western blot analysis of extracts from COLO cells, using PGLS antibody.