



Web: www.anbobio.com
www.dijibio.com
Order: order@dijibio.com
Tel: (86) 519 8805 0026

ADAM32 Antibody [#C14296]

Catalog Number: C14296

Concentration: 1mg/ml

Swiss-Prot No.: Q8TC27

Other Names: a disintegrin and metalloprotease domain 32; a disintegrin and metalloproteinase domain 32; ADA32; ADAM 32; ADAM metallopeptidase domain 32; ADAM32; Disintegrin and metalloproteinase domain-containing protein 32; FLJ26299; FLJ29004; metalloproteinase 12-like protein

Storage/Stability: Store at -20°C/1 year

Form of Antibody: Rabbit IgG in phosphate buffered saline (without Mg²⁺ and Ca²⁺), pH 7.4, 150mM NaCl, 0.02% sodium azide and 50% glycerol.

Immunogen: The antiserum was produced against synthesized peptide derived from Internal of human

ADAM32.

Purification: The antibody was affinity-purified from rabbit antiserum by affinity-chromatography using epitope-specific immunogen.

Specificity: ADAM32 antibody detects endogenous levels of total ADAM32 protein.

Reactivity: Human

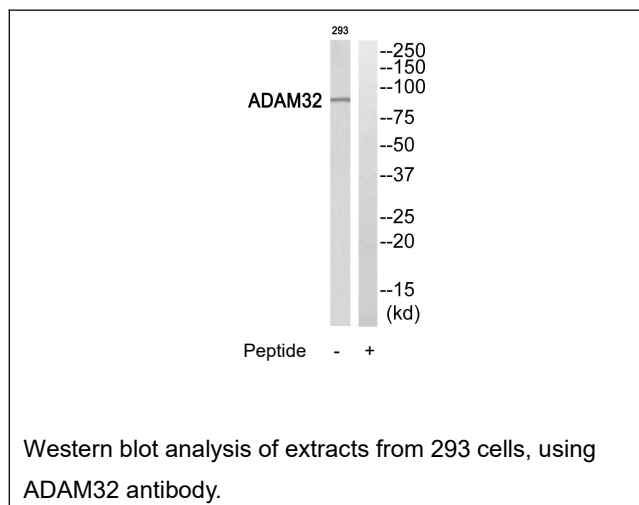
Applications: WB: 1:500~1:3000 ELISA: 1:5000

References:

Clark H.F., Genome Res. 13:2265-2270(2003).

Nusbaum C., Nature 439:331-335(2006).

Zhang Z., Protein Sci. 13:2819-2824(2004).



For Research Use Only