



Web: www.anbobio.com
www.dijibio.com
Order: order@dijibio.com
Tel: (86) 519 8805 0026

ALDH3B1 Antibody [#C14386]

Catalog Number: C14386

Concentration: 1mg/ml

Swiss-Prot No.: P43353

Other Names: Aldehyde dehydrogenase 3B1; EC 1.2.1.5;
Aldehyde dehydrogenase 7

Storage/Stability: Store at -20°C/1 year

Form of Antibody: Rabbit IgG in phosphate buffered saline (without Mg²⁺ and Ca²⁺), pH 7.4, 150mM NaCl, 0.02% sodium azide and 50% glycerol.

Immunogen: The antiserum was produced against synthesized peptide derived from internal of human ALDH3B1.

Purification: The antibody was affinity-purified from

rabbit antiserum by affinity-chromatography using epitope-specific immunogen.

Specificity: ALDH3B1 antibody detects endogenous levels of total ALDH3B1 protein.

Reactivity: Human (Identities = 100%, Positives = 100%)

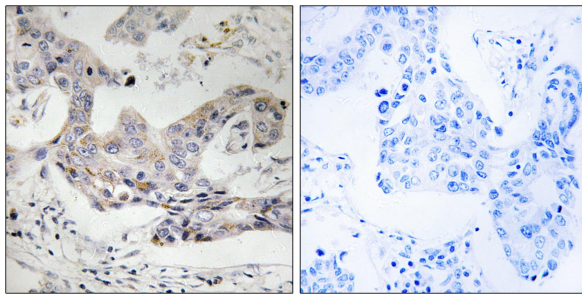
Applications: WB: 1:500~1:3000 IHC: 1:50~1:100
ELISA: 1:40000

References:

Hsu L.C., Gene 151:285-289(1994).

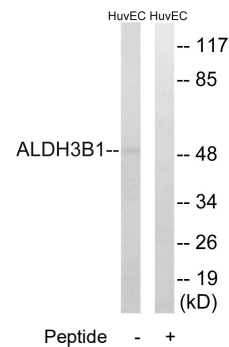
Kalnine N., Submitted (AUG-2003) to the EMBL/GenBank/DDBJ databases.

Imami K., Anal. Sci. 24:161-166(2008).



Peptide - +

Immunohistochemistry analysis of paraffin-embedded human breast carcinoma tissue, using ALDH3B1 antibody.



Western blot analysis of extracts from HuvEc cells, using ALDH3B1 antibody.