



Web: www.anbobio.com
www.dijibio.com
Order: order@dijibio.com
Tel: (86) 519 8805 0026

MRPL40 Antibody [#C14077]

Catalog Number: C14077

Concentration: 1mg/ml

Swiss-Prot No.: Q9NQ50

Other Names: 39S ribosomal protein L40, mitochondrial; L40mt; mitochondrial ribosomal protein L40; MRP-40; MRP-L22; NLVCF; nuclear localization signal-containing protein deleted in velocardiofacial syndrome; RM40; up-regulated in metastasis; URIM

Storage/Stability: Store at -20°C/1 year

Form of Antibody: Rabbit IgG in phosphate buffered saline (without Mg²⁺ and Ca²⁺), pH 7.4, 150mM NaCl, 0.02% sodium azide and 50% glycerol.

Immunogen: The antiserum was produced against synthesized peptide derived from internal of human MRPL40.

Purification: The antibody was affinity-purified from rabbit antiserum by affinity-chromatography using epitope-specific immunogen.

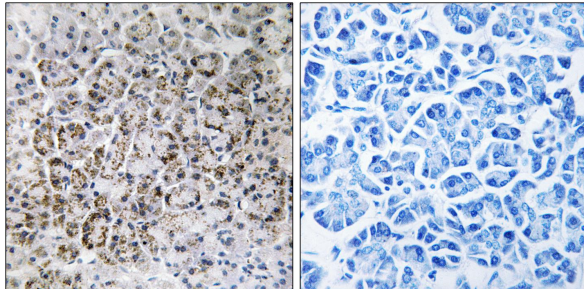
Specificity: MRPL40 antibody detects endogenous levels of total MRPL40 protein.

Reactivity: Human (Identities = 100%, Positives = 100%)

Applications: WB: 1:500~1:3000 IHC: 1:50~1:100
ELISA: 1:40000

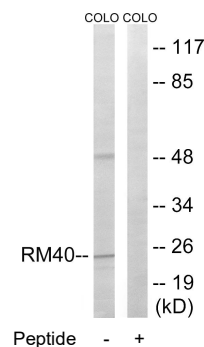
References:

Collins J.E., Genome Biol. 5:RESEARCH84.1-RESEARCH84.11(2004).
The MGC Project Team; Genome Res. 14:2121-2127(2004).
Hildebrandt T., Anticancer Res. 19:525-530(1999).



Peptide - +

Immunohistochemistry analysis of paraffin-embedded human pancreas tissue using MRPL40 antibody.



Western blot analysis of extracts from COLO cells, using MRPL40 antibody.