



Web: www.anbobio.com
www.dijibio.com
Order: order@dijibio.com
Tel: (86) 519 8805 0026

MRPL46 Antibody [#C14082]

Catalog Number: C14082

Concentration: 1mg/ml

Swiss-Prot No.: Q9H2W6

Other Names: mitochondrial ribosomal protein l46

Storage/Stability: Store at -20°C/1 year

Form of Antibody: Rabbit IgG in phosphate buffered saline (without Mg²⁺ and Ca²⁺), pH 7.4, 150mM NaCl, 0.02% sodium azide and 50% glycerol.

Immunogen: The antiserum was produced against synthesized peptide derived from internal of human MRPL46.

Purification: The antibody was affinity-purified from rabbit antiserum by affinity-chromatography using

epitope-specific immunogen.

Specificity: MRPL46 antibody detects endogenous levels of total MRPL46 protein.

Reactivity: Human (Identities = 100%, Positives = 100%);
Mouse (Identities = 82%, Positives = 94%);
Rat (Identities = 82%, Positives = 94%)

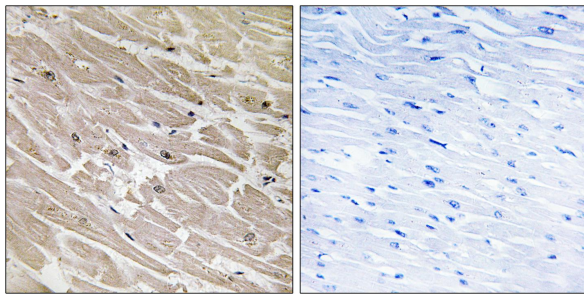
Applications: WB: 1:500~1:3000 IHC: 1:50~1:100
ELISA: 1:40000

References:

Carim-Todd L., DNA Seq. 12:91-96(2001).

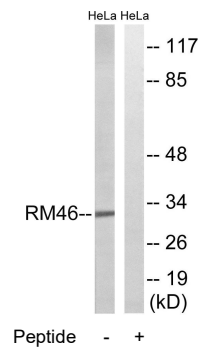
The MGC Project Team; Genome Res. 14:2121-2127(2004).

Koc E.C., J. Biol. Chem. 276:43958-43969(2001).



Peptide - +

Immunohistochemistry analysis of paraffin-embedded human heart tissue using MRPL46 antibody.



Western blot analysis of extracts from HeLa cells, using MRPL46 antibody.