



Web: www.anbobio.com
www.dijibio.com
Order: order@dijibio.com
Tel: (86) 519 8805 0026

ATP5D Antibody [#C14592]

Catalog Number: C14592

Concentration: 1mg/ml

Swiss-Prot No.: P30049

Other Names: ATP synthase subunit delta, mitochondrial

Storage/Stability: Store at -20°C/1 year

Form of Antibody: Rabbit IgG in phosphate buffered saline (without Mg²⁺ and Ca²⁺), pH 7.4, 150mM NaCl, 0.02% sodium azide and 50% glycerol.

Immunogen: The antiserum was produced against synthesized peptide derived from internal of human ATP5D.

Purification: The antibody was affinity-purified from rabbit antiserum by affinity-chromatography using

epitope-specific immunogen.

Specificity: ATP5D antibody detects endogenous levels of total ATP5D protein.

Reactivity: Human (Identities = 100%, Positives = 100%);
Mouse (Identities = 83%, Positives = 91%);
Rat (Identities = 91%, Positives = 100%)

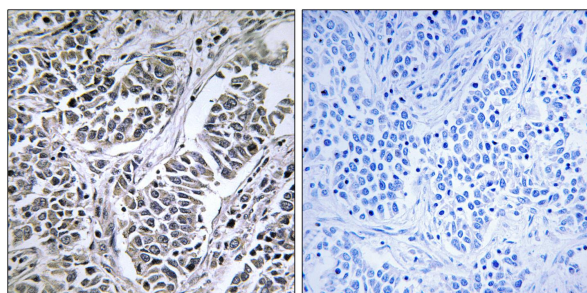
Applications: IHC: 1:50~1:100 IF: 1:100~1:500
ELISA: 1:20000

References:

Grimwood J., Nature 428:529-535(2004).

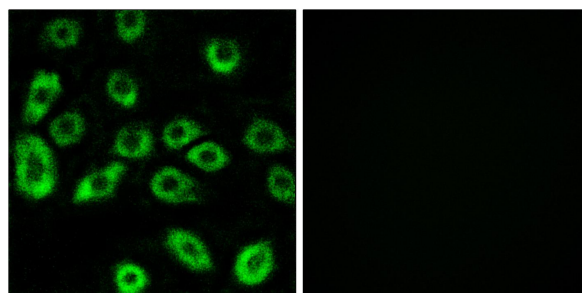
The MGC Project Team; Genome Res. 14:2121-2127(2004).

Hochstrasser D.F., Electrophoresis 13:992-1001(1992).



Peptide - +

Immunohistochemistry analysis of paraffin-embedded human lung carcinoma tissue using ATP5D antibody.



Peptide - +

Immunofluorescence analysis of A549 cells, using ATP5D antibody.