



Web: www.anbobio.com
www.dijibio.com
Order: order@dijibio.com
Tel: (86) 519 8805 0026

ATP5G3 Antibody [#C14599]

Catalog Number: C14599

Concentration: 1mg/ml

Swiss-Prot No.: P48201

Other Names: ATP synthase lipid-binding protein, mitochondrial; ATP synthase proteolipid P3; ATPase protein 9; ATPase subunit c

Storage/Stability: Store at -20°C/1 year

Form of Antibody: Rabbit IgG in phosphate buffered saline (without Mg²⁺ and Ca²⁺), pH 7.4, 150mM NaCl, 0.02% sodium azide and 50% glycerol.

Immunogen: The antiserum was produced against synthesized peptide derived from internal of human ATP5G3.

Purification: The antibody was affinity-purified from

rabbit antiserum by affinity-chromatography using epitope-specific immunogen.

Specificity: ATP5G3 antibody detects endogenous levels of total ATP5G3 protein.

Reactivity: Human (Identities = 100%, Positives = 100%);
Rat (Identities = 100%, Positives = 100%)

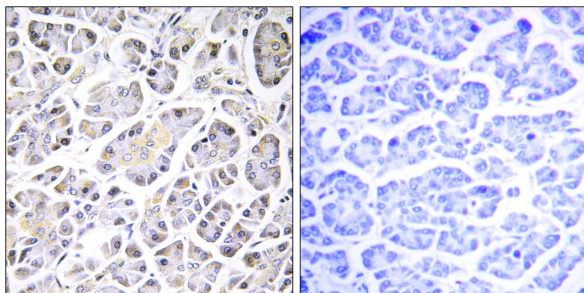
Applications: IHC: 1:50~1:100 IF: 1:100~1:500
ELISA: 1:40000

References:

Yan W.L., Genomics 24:375-377(1994).

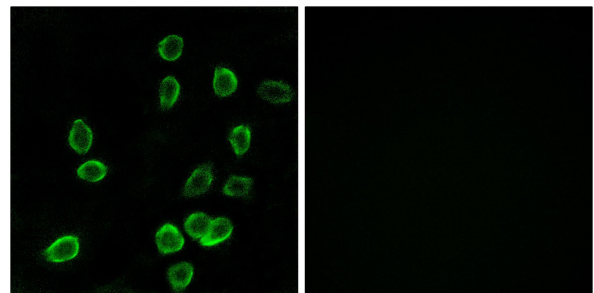
L., Du H., Nature 434:724-731(2005).

The MGC Project Team; Genome Res. 14:2121-2127(2004).



Peptide - +

Immunohistochemistry analysis of paraffin-embedded human pancreas tissue using ATP5G3 antibody.



Peptide - +

Immunofluorescence analysis of A549 cells, using ATP5G3 antibody.