



Web: www.anbobio.com

www.dijibio.com

Order: order@dijibio.com

Tel: (86) 519 8805 0026

ATP5A1 Antibody [#C14602]

Catalog Number: C14602

Concentration: 1mg/ml

Swiss-Prot No.: P25705

Other Names: ATP synthase alpha chain, mitochondrial precursor; ATP5A; ATPA; EC 3.6.3.14

Storage/Stability: Store at -20°C/1 year

Form of Antibody: Rabbit IgG in phosphate buffered saline (without Mg²⁺ and Ca²⁺), pH 7.4, 150mM NaCl, 0.02% sodium azide and 50% glycerol.

Immunogen: The antiserum was produced against synthesized peptide derived from internal of human ATP5A1.

Purification: The antibody was affinity-purified from

rabbit antiserum by affinity-chromatography using epitope-specific immunogen.

Specificity: ATP5A1 antibody detects endogenous levels of total ATP5A1 protein.

Reactivity: Human (Identities = 100%, Positives = 100%)

Mouse (Identities = 92%, Positives = 100%);

Rat (Identities = 92%, Positives = 100%)

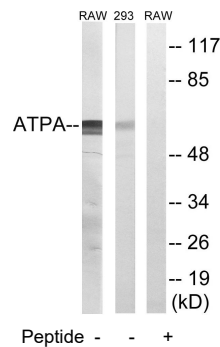
Applications: WB: 1:500~1:3000 ELISA: 1:40000

References:

Kataoka H., *Biochim. Biophys. Acta* 1089:393-395(1991).

Godbout R., *Gene* 123:195-201(1993).

Akiyama S., *Biochim. Biophys. Acta* 1219:129-140(1994).



Western blot analysis of extracts from RAW264.7 cells and 293 cells, using ATP5A1 antibody.