



Web: www.anbobio.com
www.dijibio.com
Order: order@dijibio.com
Tel: (86) 519 8805 0026

ABCB7 Antibody [#C14621]

Catalog Number: C14621

Concentration: 1mg/ml

Swiss-Prot No.: O75027

Other Names: ABC transporter 7 protein; ABC7; Anemia, sideroblastic, with spinocerebellar ataxia; ASAT; Atm1p; ATP-binding cassette 7; ATP-binding cassette sub-family B member 7, mitochondrial; ATP-binding cassette transporter 7; ATP-binding cassette, sub-family B (MDR/TAP), member 7

Storage/Stability: Store at -20°C/1 year

Form of Antibody: Rabbit IgG in phosphate buffered saline (without Mg²⁺ and Ca²⁺), pH 7.4, 150mM NaCl, 0.02% sodium azide and 50% glycerol.

Immunogen: The antiserum was produced against synthesized peptide derived from internal of human

ABCB7.

Purification: The antibody was affinity-purified from rabbit antiserum by affinity-chromatography using epitope-specific immunogen.

Specificity: ABCB7 antibody detects endogenous levels of total ABCB7 protein.

Reactivity: Human (Identities = 100%, Positives = 100%)

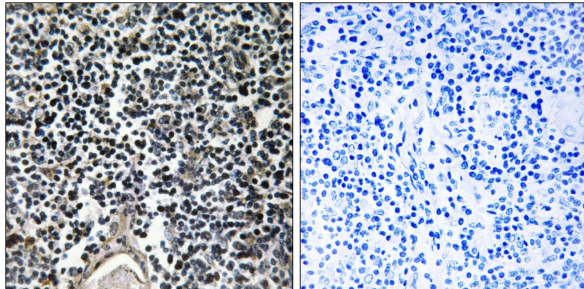
Applications: WB: 1:500~1:3000 IHC: 1:50~1:100
ELISA: 1:5000

References:

Bekri S., Blood 96:3256-3264(2000).

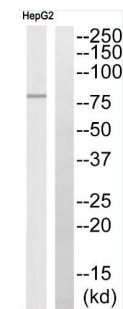
Ross M.T., Nature 434:325-337(2005).

Maguire A., Br. J. Haematol. 115:910-917(2001).



Peptide - +

Immunohistochemistry analysis of paraffin-embedded human thymus gland tissue, using ABCB7 antibody.



Peptide - +

Western blot analysis of extracts from HepG2 cells, using ABCB7 antibody.

For Research Use Only