



**Web:** [www.anbobio.com](http://www.anbobio.com)  
[www.dijibio.com](http://www.dijibio.com)  
**Order:** [order@dijibio.com](mailto:order@dijibio.com)  
**Tel:** (86) 519 8805 0026

## IRX2 Antibody [#C11651]

**Catalog Number:** C11651

**Concentration:** 1mg/ml

**Swiss-Prot No.:** Q9BZ11

**Other Names:** Iroquois-class homeodomain protein IRX-2, Iroquois homeobox protein 2, Homeodomain protein IRXA2, IRX2, IRXA2

**Storage/Stability:** Store at -20°C/1 year

**Form of Antibody:** Rabbit IgG in phosphate buffered saline (without Mg<sup>2+</sup> and Ca<sup>2+</sup>), pH 7.4, 150mM NaCl, 0.02% sodium azide and 50% glycerol.

**Immunogen:** The antiserum was produced against synthesized peptide derived from internal of human IRX2.

**Purification:** The antibody was affinity-purified from

rabbit antiserum by affinity-chromatography using epitope-specific immunogen.

**Specificity:** IRX2 antibody detects endogenous levels of total IRX2 protein.

**Reactivity:** Human

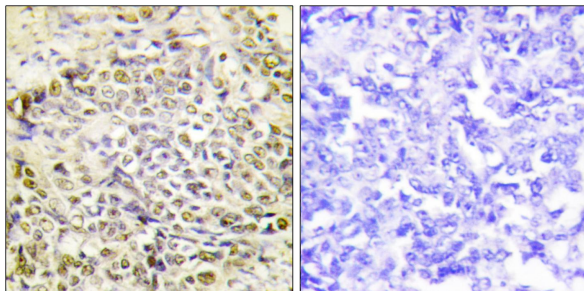
**Applications:** WB: 1:500~1:3000 IHC: 1:50~1:100  
IF: 1:100~1:500 ELISA: 1:5000

**References:**

Hansen L., Submitted (JUL-2003) to the EMBL/GenBank/DDBJ databases.

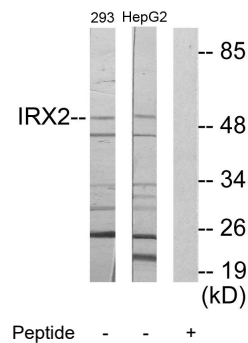
The MGC Project Team, Genome Res. 14:2121-2127(2004).

Ogura K., Cytogenet. Cell Genet. 92:320-325(2001).

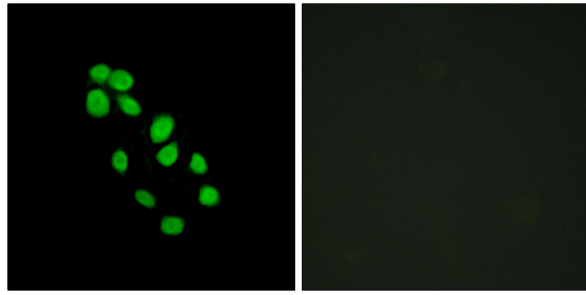


Peptide - +

Immunohistochemistry analysis of paraffin-embedded human lung carcinoma tissue using IRX2 antibody.



Western blot analysis of extracts from 293 cells and HepG2 cells, using IRX2 antibody.



Peptide

-

+

Immunofluorescence analysis of HepG2 cells, using IRX2 antibody.