



**Web:** [www.anbobio.com](http://www.anbobio.com)  
[www.dijibio.com](http://www.dijibio.com)  
**Order:** [order@dijibio.com](mailto:order@dijibio.com)  
**Tel:** (86) 519 8805 0026

## XRN2 Antibody [#C11672]

**Catalog Number:** C11672

**Concentration:** 1mg/ml

**Swiss-Prot No.:** Q9H0D6

**Other Names:** 5'-3' exoribonuclease 2, EC 3.1.13.-, DHM1-like protein, DHP protein, XRN2

**Storage/Stability:** Store at -20°C/1 year

**Form of Antibody:** Rabbit IgG in phosphate buffered saline (without Mg<sup>2+</sup> and Ca<sup>2+</sup>), pH 7.4, 150mM NaCl, 0.02% sodium azide and 50% glycerol.

**Immunogen:** The antiserum was produced against synthesized peptide derived from internal of human XRN2.

**Purification:** The antibody was affinity-purified from rabbit antiserum by affinity-chromatography using epitope-specific immunogen.

**Specificity:** XRN2 antibody detects endogenous levels of total XRN2 protein.

**Reactivity:** Human, Mouse

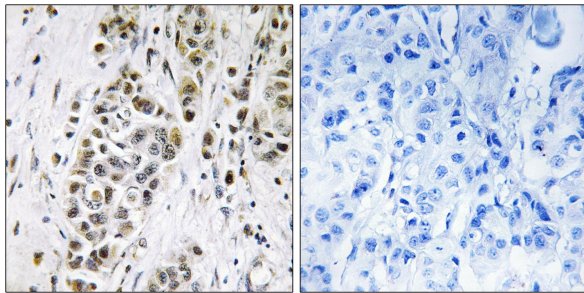
**Applications:** WB: 1:500~1:3000 IHC: 1:50~1:100  
ELISA: 1:1000

**References:**

Zhang M., Genomics 59:252-254(1999).

Li J., DNA Seq. 16:143-146(2005).

Wiemann S., Genome Res. 11:422-435(2001).

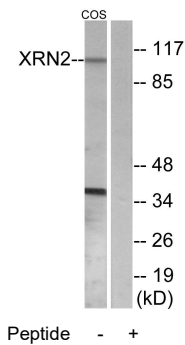


Peptide

-

+

Immunohistochemistry analysis of paraffin-embedded human breast carcinoma tissue using XRN2 antibody.



Peptide

-

+

Western blot analysis of extracts from COS-7 cells, using XRN2 antibody.