



**Web:** [www.anbobio.com](http://www.anbobio.com)  
[www.dijibio.com](http://www.dijibio.com)  
**Order:** [order@dijibio.com](mailto:order@dijibio.com)  
**Tel:** (86) 519 8805 0026

## MUC13 Antibody [#C11690]

**Catalog Number:** C11690

**Concentration:** 1mg/ml

**Swiss-Prot No.:** Q9H3R2

**Other Names:** Mucin-13 [Precursor], Down-regulated in colon cancer 1, MUC13, DRCC1, RECC, UNQ6194/PRO20221

**Storage/Stability:** Store at -20°C/1 year

**Form of Antibody:** Rabbit IgG in phosphate buffered saline (without Mg<sup>2+</sup> and Ca<sup>2+</sup>), pH 7.4, 150mM NaCl, 0.02% sodium azide and 50% glycerol.

**Immunogen:** The antiserum was produced against synthesized peptide derived from internal of human MUC13.

**Purification:** The antibody was affinity-purified from rabbit antiserum by affinity-chromatography using epitope-specific immunogen.

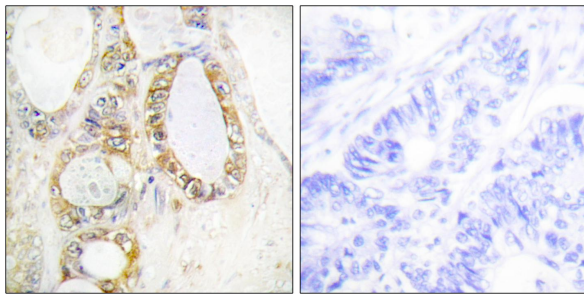
**Specificity:** MUC13 antibody detects endogenous levels of total MUC13 protein.

**Reactivity:** Human

**Applications:** WB: 1:500~1:3000 IHC: 1:50~1:100  
IF: 1:100~1:500 ELISA: 1:5000

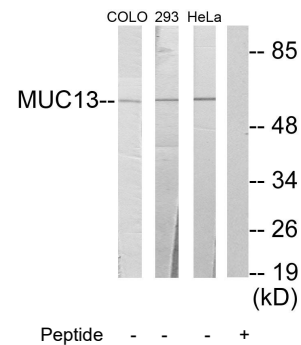
**References:**

Masayoshi I., Submitted (DEC-1999) to the EMBL/GenBank/DDBJ databases.  
Williams S.J., J. Biol. Chem. 276:18327-18336(2001).  
Clark H.F., Genome Res. 13:2265-2270(2003).

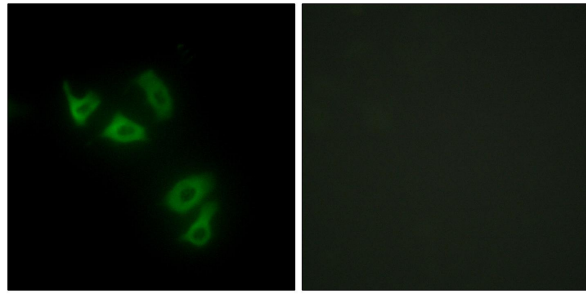


Peptide - +

Immunohistochemistry analysis of paraffin-embedded human colon carcinoma tissue using MUC13 antibody.



Western blot analysis of extracts from COLO cells, 293 cells and HeLa cells, using MUC13 antibody.



Peptide                      -                      +

Immunofluorescence analysis of HepG2 cells, using  
MUC13 antibody.