



Web: www.anbobio.com
www.dijibio.com
Order: order@dijibio.com
Tel: (86) 519 8805 0026

β -Tubulin Mouse Monoclonal Antibody [#E0013]

Catalog Number: E0013

Concentration: 1mg/ml

Swiss-Prot No.: P07437

Other Names: beta 5-tubulin; beta 1b tubulin; beta-4 tubulin; M40; MGC117247; MGC16435; OK/SW-cl.56; TBB5; TUBB; TUBB1; TUBB5; Tubulin beta chain; tubulin beta polypeptide; tubulin beta-1 chain; Tubulin beta-5 chain; tubulin, beta; tubulin, beta polypeptide

Storage/Stability: Store at -20°C/1 year

Form of Antibody: Mouse IgG1 in phosphate buffered saline (without Mg²⁺ and Ca²⁺), pH 7.4, 150mM NaCl, 0.02% sodium azide and 50% glycerol.

Immunogen: The antiserum was produced against Full-length β -Tubulin protein of human.

Purification: The antibody was affinity-purified from

mouse antiserum by affinity-chromatography using epitope-specific immunogen.

Specificity: β -Tubulin Mouse Monoclonal antibody detects endogenous levels of total β -Tubulin protein.

Reactivity: Human; Monkey; Mouse

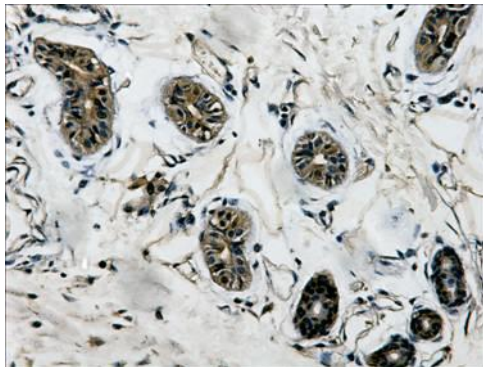
Applications: WB: 1:5,000-10,000 IHC: 1:200

References:

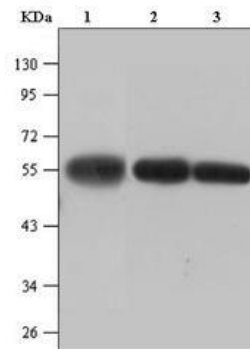
Lee M.G.-S., Cell 33:477-487(1983).

Crabtree D.V., Bioorg. Med. Chem. 9:1967-1976(2001).

Yu W., Submitted (JUN-1998) to the EMBL/GenBank/DDBJ databases.



Immunohistochemistry analysis of paraffin-embedded human colon tissue, using β -Tubulin mouse Monoclonal antibody.



Western blot analysis of extracts from HeLa cell lysate(lane1) , Rat brain tissue lysate(lane2) and Mouse brain tissue lysate(lane3), using β -Tubulin mouse Monoclonal antibody.

For Research Use Only