



Web: www.anbobio.com
www.dijibio.com
Order: order@dijibio.com
Tel: +86 519 8805 0026

CCRL1 Antibody [#G060]

Catalog Number: G060

Concentration: 1mg/ml

Swiss-Prot No.: Q9NPB9

Other Names: C-C chemokine receptor type 11; C-C CKR-11; CC-CKR-11; CCR-11; CC chemokine receptor-like 1; CCRL1; CCX CKR; CCRL1; CCBP2, CCR11, VSHK1

Storage/Stability: Store at -20°C/1 year

Form of Antibody: Rabbit IgG in phosphate buffered saline (without Mg²⁺ and Ca²⁺), pH 7.4, 150mM NaCl, 0.02% sodium azide and 50% glycerol.

Immunogen: The antiserum was produced against synthesized peptide derived from internal of human

CCRL1.

Purification: The antibody was affinity-purified from rabbit antiserum by affinity-chromatography using epitope-specific immunogen.

Specificity: CCRL1 antibody detects endogenous levels of total CCRL1 protein.

Reactivity: Human, Mouse

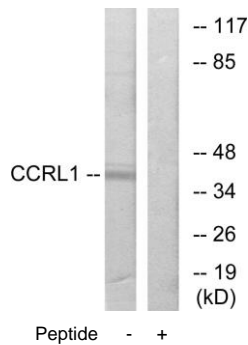
Applications: WB: 1:500~1:3000 IF: 1:100~1:500
ELISA: 1:5000

References:

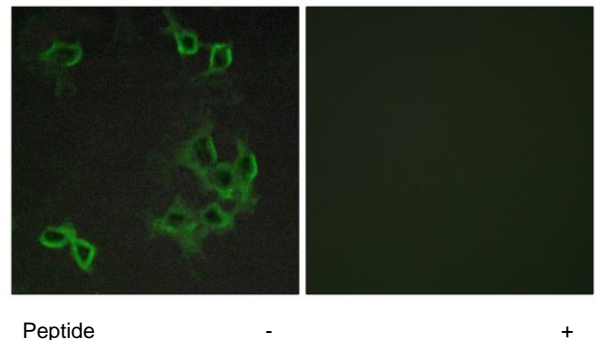
Khoja H., Gene 246:229-238(2000).

Schweickart V.L., J. Biol. Chem. 275:9550-9556(2000).

Gosling J., J. Immunol. 164:2851-2856(2000).



Western blot analysis of extracts from 293 cells, using CCRL1 antibody.



Immunofluorescence analysis of COS-7 cells, using CCRL1 antibody.