



Web: www.anbobio.com
www.dijibio.com
Order: order@dijibio.com
Tel: +86 519 8805 0026

CXCR7 Antibody [#G065]

Catalog Number: G065

Concentration: 1mg/ml

Swiss-Prot No.: P25106

Other Names: chemokine orphan receptor 1; CXCR-7; CXCR7; G-protein coupled receptor 159; G-protein coupled receptor RDC1; RDC1

Storage/Stability: Store at -20°C/1 year

Form of Antibody: Rabbit IgG in phosphate buffered saline (without Mg²⁺ and Ca²⁺), pH 7.4, 150mM NaCl, 0.02% sodium azide and 50% glycerol.

Immunogen: The antiserum was produced against synthesized peptide derived from C-terminal of human CXCR7.

Purification: The antibody was affinity-purified from rabbit antiserum by affinity-chromatography using epitope-specific immunogen.

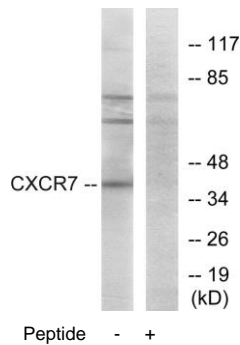
Specificity: CXCR7 antibody detects endogenous levels of total CXCR7 protein.

Reactivity: Human, Mouse, Rat

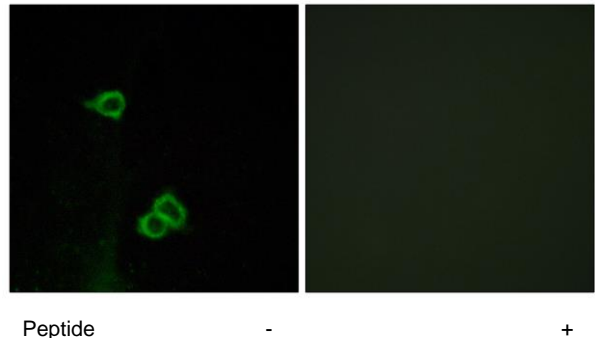
Applications: WB: 1:500~1:3000 IF: 1:100~1:500
ELISA: 1:1000

References:

Sreedharan S.P., Proc. Natl. Acad. Sci. U.S.A. 88:4986-4990(1991).
Hillier L.W., Nature 434:724-731(2005).
Nagata S., Trends Pharmacol. Sci. 13:102-103(1992).



Western blot analysis of extracts from COS-7 cells, using CXCR7 antibody.



Immunofluorescence analysis of COS-7 cells, using CXCR7 antibody.

For Research Use Only