



Web: www.anbobio.com
www.dijibio.com
Order: order@dijibio.com
Tel: (86) 519 8805 0026

TM16G Antibody [#C11220]

Catalog Number: C11220

Concentration: 1mg/ml

Swiss-Prot No.: Q6IWH7

Other Names: New gene expressed in prostate; Prostate cancer-associated protein 5; IPCA-5;

Dresden-transmembrane protein of the prostate; D-TMPP

Storage/Stability: Store at -20°C/1 year

Form of Antibody: Rabbit IgG in phosphate buffered saline (without Mg²⁺ and Ca²⁺), pH 7.4, 150mM NaCl, 0.02% sodium azide and 50% glycerol.

Immunogen: The antiserum was produced against synthesized peptide derived from C-terminal of human TM16G.

Purification: The antibody was affinity-purified from rabbit antiserum by affinity-chromatography using epitope-specific immunogen.

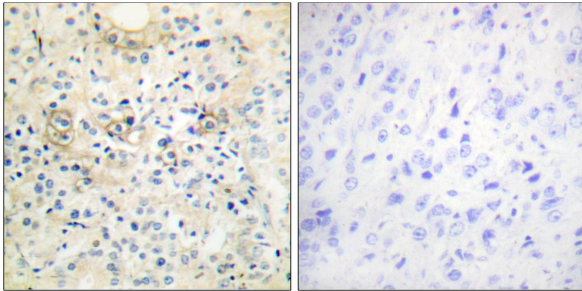
Specificity: TM16G antibody detects endogenous levels of total TM16G protein.

Reactivity: Human (Identities = 100%, Positives = 100%)

Applications: IHC: 1:50~1:100 IF: 1:100~1:500
ELISA: 1:20000

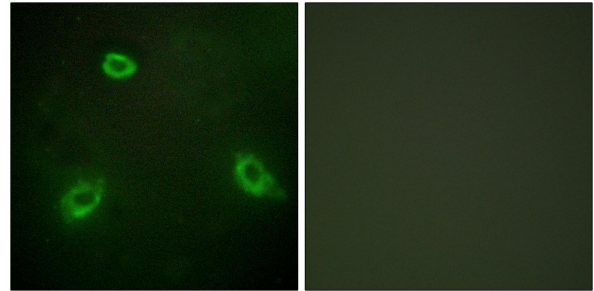
References:

Bera T.K., Proc. Natl. Acad. Sci. U.S.A. 101:3059-3064(2004).
Walker M.G., Genome Res. 9:1198-1203(1999).
Kato M., Int. J. Mol. Med. 14:759-764(2004).



Peptide - +

Immunohistochemistry analysis of paraffin-embedded human prostate carcinoma tissue, using TM16G antibody.



Peptide - +

Immunofluorescence analysis of HepG2 cells, using TM16G antibody.