



Web: www.anbobio.com
www.dijibio.com
Order: order@dijibio.com
Tel: (86) 519 8805 0026

CaMK1- β Antibody [#C11226]

Catalog Number: C11226

Concentration: 1mg/ml

Swiss-Prot No.: Q6P2M8

Other Names: Calcium/calmodulin-dependent protein kinase type 1B, EC 2.7.11.17, CaM kinase IB, CaM kinase I beta, CaMKI-beta, CaM-KI beta, Pregnancy up-regulated non-ubiquitously-expressed CaM kinase, PNCK

Storage/Stability: Store at -20°C/1 year

Form of Antibody: Rabbit IgG in phosphate buffered saline (without Mg²⁺ and Ca²⁺), pH 7.4, 150mM NaCl, 0.02% sodium azide and 50% glycerol.

Immunogen: The antiserum was produced against synthesized peptide derived from internal of human CaMK1- β .

Purification: The antibody was affinity-purified from rabbit antiserum by affinity-chromatography using epitope-specific immunogen.

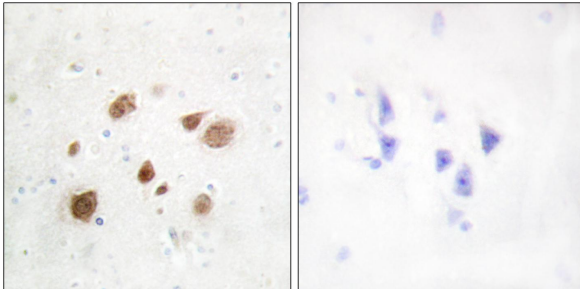
Specificity: CaMK1- β antibody detects endogenous levels of total CaMK1- β protein.

Reactivity: Human, Mouse, Rat

Applications: WB: 1:500~1:3000 IHC: 1:50~1:100
ELISA: 1:10000

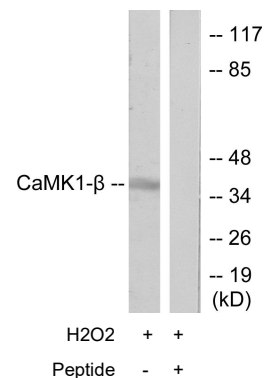
References:

Li W.B., Submitted (JUL-2004) to the EMBL/GenBank/DDBJ databases.
The MGC Project Team, Genome Res. 14:2121-2127(2004).
Sjoebloom T., Science 314:268-274(2006).



Peptide - +

Immunohistochemistry analysis of paraffin-embedded human brain tissue using CaMK1- β antibody.



Western blot analysis of extracts from LOVO cells, treated with H₂O₂ (100uM, 30mins), using CaMK1- β antibody.