



**Web:** [www.anbobio.com](http://www.anbobio.com)  
[www.dijibio.com](http://www.dijibio.com)  
**Order:** [order@dijibio.com](mailto:order@dijibio.com)  
**Tel:** (86) 519 8805 0026

## TEP1 Antibody [#C11590]

**Catalog Number:** C11590

**Concentration:** 1mg/ml

**Swiss-Prot No.:** Q99973

**Other Names:** Telomerase-associated protein 1;  
Telomerase protein 1; p240; p80 telomerase homolog

**Storage/Stability:** Store at -20°C/1 year

**Form of Antibody:** Rabbit IgG in phosphate buffered saline (without Mg<sup>2+</sup> and Ca<sup>2+</sup>), pH 7.4, 150mM NaCl, 0.02% sodium azide and 50% glycerol.

**Immunogen:** The antiserum was produced against synthesized peptide derived from internal of human TEP1.

**Purification:** The antibody was affinity-purified from rabbit antiserum by affinity-chromatography using epitope-specific immunogen.

**Specificity:** TEP1 antibody detects endogenous levels of total TEP1 protein.

**Reactivity:** Human (Identities = 100%, Positives = 100%)

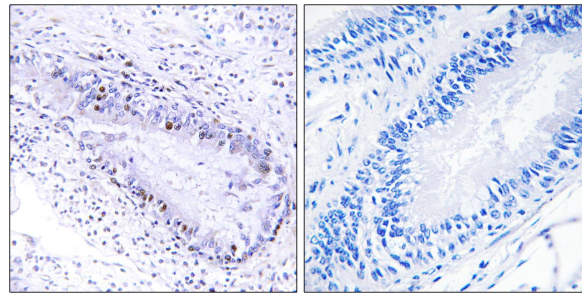
**Applications:** IHC: 1:50~1:100 ELISA: 1:10000

**References:**

Harrington L., Science 275:973-977(1997).

Harrington L., Genes Dev. 11:3109-3115(1997).

Kickhoefer V.A., J. Biol. Chem. 274:32712-32717(1999).



Peptide - +

Immunohistochemistry analysis of paraffin-embedded human lung carcinoma tissue, using TEP1 antibody.