



**Web:** [www.anbobio.com](http://www.anbobio.com)  
[www.dijibio.com](http://www.dijibio.com)  
**Order:** [order@dijibio.com](mailto:order@dijibio.com)  
**Tel:** (86) 519 8805 0026

## ELAC2 Antibody [#C11594]

**Catalog Number:** C11594

**Concentration:** 1mg/ml

**Swiss-Prot No.:** Q9BQ52

**Other Names:** Zinc phosphodiesterase ELAC protein 2, EC 3.1.26.11, Ribonuclease Z 2, RNase Z 2, tRNase Z 2, tRNA 3 endonuclease 2, ElaC homolog protein 2, Heredity prostate cancer protein 2, ELAC2, HPC2

**Storage/Stability:** Store at -20°C/1 year

**Form of Antibody:** Rabbit IgG in phosphate buffered saline (without Mg<sup>2+</sup> and Ca<sup>2+</sup>), pH 7.4, 150mM NaCl, 0.02% sodium azide and 50% glycerol.

**Immunogen:** The antiserum was produced against synthesized peptide derived from internal of human

ELAC2.

**Purification:** The antibody was affinity-purified from rabbit antiserum by affinity-chromatography using epitope-specific immunogen.

**Specificity:** ELAC2 antibody detects endogenous levels of total ELAC2 protein.

**Reactivity:** Human (Identities = 100%, Positives = 100%)

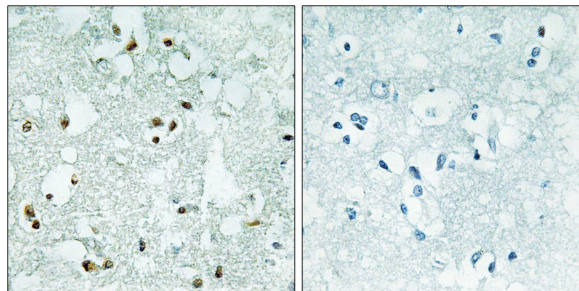
**Applications:** IHC: 1:50~1:100 ELISA: 1:10000

**References:**

Tavtigian S.V., Nat. Genet. 27:172-180(2001).

Ota T., Nat. Genet. 36:40-45(2004).

Takaku H., Nucleic Acids Res. 31:2272-2278(2003).



Peptide

-

+

Immunohistochemistry analysis of paraffin-embedded human brain tissue, using ELAC2 antibody.