



Web: www.anbobio.com
www.dijibio.com
Order: order@dijibio.com
Tel: (86) 519 8805 0026

ASAH3L Antibody [#C14402]

Catalog Number: C14402

Concentration: 1mg/ml

Swiss-Prot No.: Q5QJU3

Other Names: Alkaline ceramidase 2, AlkCDase 2, Alkaline CDase 2, haCER2, EC=3.5.1.23, Acylsphingosine deacylase 3-like, N-acylsphingosine amidohydrolase 3-like

Storage/Stability: Store at -20°C/1 year

Form of Antibody: Rabbit IgG in phosphate buffered saline (without Mg²⁺ and Ca²⁺), pH 7.4, 150mM NaCl, 0.02% sodium azide and 50% glycerol.

Immunogen: The antiserum was produced against synthesized peptide derived from internal of human ASAH3L.

Purification: The antibody was affinity-purified from rabbit antiserum by affinity-chromatography using epitope-specific immunogen.

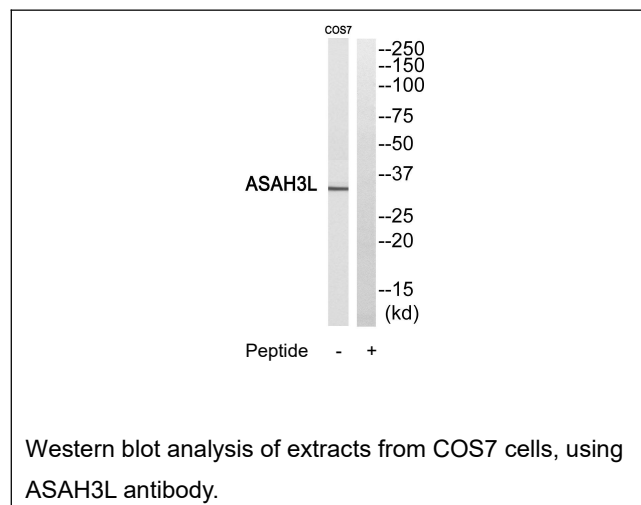
Specificity: ASAH3L antibody detects endogenous levels of total ASAH3L protein.

Reactivity: Human, Mouse

Applications: WB: 1:500~1:3000 ELISA: 1:5000

References:

Xu R., FASEB J. 20:1813-1825(2006) [PubMed: 16940153].
Wan D., Proc. Natl. Acad. Sci. U.S.A. 101:15724-15729(2004) [PubMed: 15498874].
Humphray S.J., Nature 429:369-374(2004) [PubMed: 15164053].



For Research Use Only