



Web: www.anbobio.com
www.dijibio.com
Order: order@dijibio.com
Tel: (86) 519 8805 0026

PHCA Antibody [#C14411]

Catalog Number: C14411

Concentration: 1mg/ml

Swiss-Prot No.: Q9NUN7

Other Names: Alkaline phytoceramidase; Aphc; Alkaline ceramidase; EC 3.5.1.-; Alkaline dihydroceramidase SB89; APHC

Storage/Stability: Store at -20°C/1 year

Form of Antibody: Rabbit IgG in phosphate buffered saline (without Mg²⁺ and Ca²⁺), pH 7.4, 150mM NaCl, 0.02% sodium azide and 50% glycerol.

Immunogen: The antiserum was produced against synthesized peptide derived from internal of human PHCA.

Purification: The antibody was affinity-purified from rabbit antiserum by affinity-chromatography using epitope-specific immunogen.

Specificity: PHCA antibody detects endogenous levels of total PHCA protein.

Reactivity: Human, Mouse

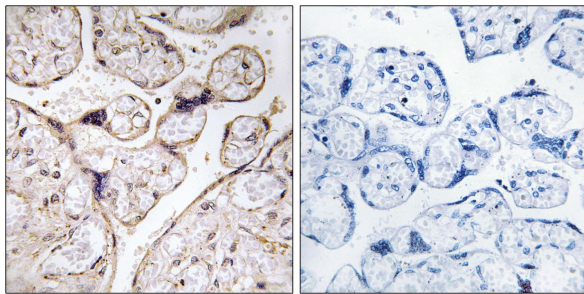
Applications: WB: 1:500~1:3000 IHC: 1:50~1:100
IF: 1:100~1:500 ELISA: 1:40000

References:

Mao C., J. Biol. Chem. 276:26577-26588(2001).

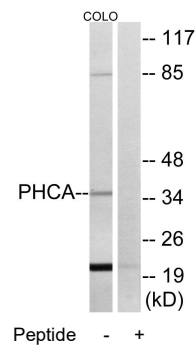
Li N., Submitted (DEC-2000) to the EMBL/GenBank/DDBJ databases.

Ota T., Nat. Genet. 36:40-45(2004).



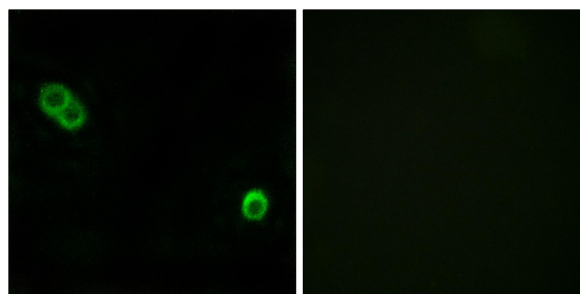
Peptide - +

Immunohistochemistry analysis of paraffin-embedded human placenta tissue using PHCA antibody.



Peptide - +

Western blot analysis of extracts from COLO cells, using PHCA antibody.



Peptide - +

Immunofluorescence analysis of MCF-7 cells, using PHCA antibody.

