



Web: [www.anbobio.com](http://www.anbobio.com)  
[www.dijibio.com](http://www.dijibio.com)  
Order: [order@dijibio.com](mailto:order@dijibio.com)  
Tel: (86) 519 8805 0026

## APPBP2 Antibody [#C14456]

**Catalog Number:** «catlog\_No»

**Concentration:** 1mg/ml

**Swiss-Prot No.:** «swissprot»

**Other Names:** «all\_name»

**Storage/Stability:** Store at -20°C/1 year

**Form of Antibody:** Rabbit IgG in phosphate buffered saline (without Mg<sup>2+</sup> and Ca<sup>2+</sup>), pH 7.4, 150mM NaCl, 0.02% sodium azide and 50% glycerol.

**Immunogen:** The antiserum was produced against synthesized peptide derived from internal of human «m».

**Purification:** The antibody was affinity-purified from rabbit antiserum by affinity-chromatography using epitope-specific immunogen.

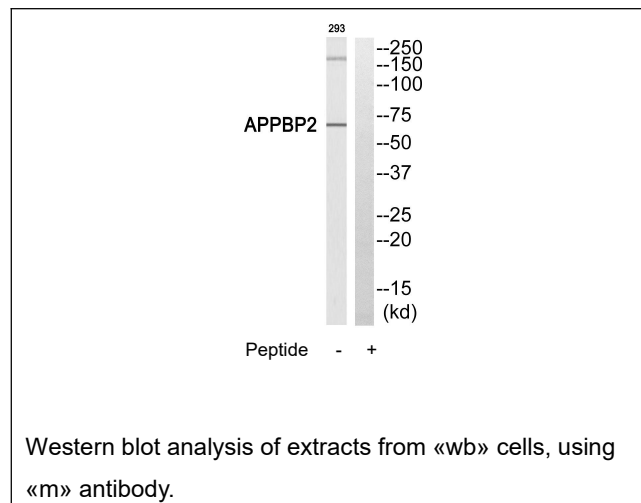
**Specificity:** «m» antibody detects endogenous levels of total «m» protein.

**Reactivity:** «Reactivity»

**Applications:** WB: 1:500~1:3000 ELISA: «elisa»

**References:**

«refer»



**For Research Use Only**