



Web: www.anbobio.com
www.dijibio.com
Order: order@dijibio.com
Tel: (86) 519 8805 0026

ALS2CR8 Antibody [#C14463]

Catalog Number: C14463

Concentration: 1mg/ml

Swiss-Prot No.: Q8N187

Other Names: Amyotrophic lateral sclerosis 2 chromosomal region candidate gene 8 protein; Calcium-response factor; CaRF; Testis development protein NYD-SP24

Storage/Stability: Store at -20°C/1 year

Form of Antibody: Rabbit IgG in phosphate buffered saline (without Mg²⁺ and Ca²⁺), pH 7.4, 150mM NaCl, 0.02% sodium azide and 50% glycerol.

Immunogen: The antiserum was produced against synthesized peptide derived from internal of human

ALS2CR8.

Purification: The antibody was affinity-purified from rabbit antiserum by affinity-chromatography using epitope-specific immunogen.

Specificity: ALS2CR8 antibody detects endogenous levels of total ALS2CR8 protein.

Reactivity: Human (Identities = 100%, Positives = 100%)

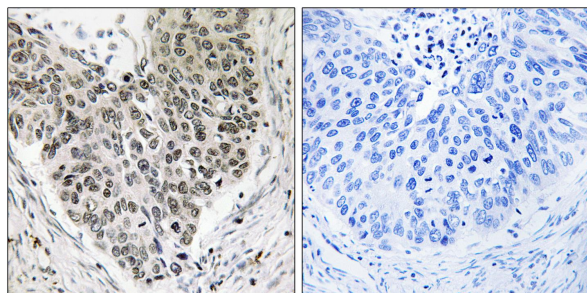
Applications: WB: 1:500~1:3000 IHC: 1:50~1:100
ELISA: 1:40000

References:

Hadano S., Nat. Genet. 29:166-173(2001).

Tao X., Neuron 33:383-395(2002).

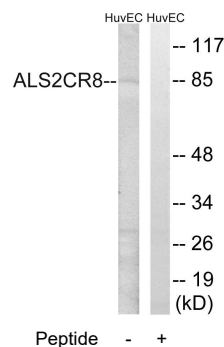
Hillier L.W., Nature 434:724-731(2005).



Peptide -

+

Immunohistochemistry analysis of paraffin-embedded human lung carcinoma tissue, using ALS2CR8 antibody.



Peptide -

+

Western blot analysis of extracts from HuvEc cells, using ALS2CR8 antibody.